



[Go to Product page](#)

Datasheet for ABIN3182713

anti-Protein Tob1 (TOB1) (pSer164) antibody

1 Image

Overview

Quantity:	100 µL
Target:	Protein Tob1 (TOB1)
Binding Specificity:	pSer164
Reactivity:	Human, Mouse, Rat
Host:	Rabbit
Clonality:	Polyclonal
Conjugate:	Un-conjugated
Application:	Western Blotting (WB), ELISA, Immunohistochemistry (IHC)

Product Details

Immunogen:	Synthesized peptide derived from human TOB1 around the phosphorylation site of S164.
Isotype:	IgG
Specificity:	Phospho-TOB1 (S164) Polyclonal Antibody detects endogenous levels of TOB1 protein only when phosphorylated at S164.
Characteristics:	Rabbit Polyclonal to Phospho-TOB1 (S164).
Purification:	The antibody was affinity-purified from rabbit antiserum by affinity-chromatography using epitope-specific immunogen.

Target Details

Target:	Protein Tob1 (TOB1)
---------	---------------------

Target Details

Alternative Name: TOB1 ([TOB1 Products](#))

Molecular Weight: 40 kDa

Gene ID: 10140

UniProt: [P50616](#)

Application Details

Application Notes: WB 1:500-1:2000, IHC 1:100-1:300, ELISA 1:5000,

Restrictions: For Research Use only

Handling

Format: Liquid

Concentration: 1 mg/mL

Buffer: Liquid in PBS containing 50 % glycerol, 0.5 % BSA and 0.02 % sodium azide.

Preservative: Sodium azide

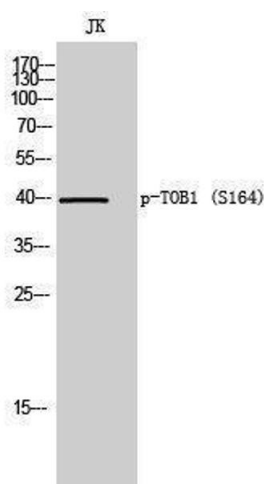
Precaution of Use: This product contains Sodium azide: a POISONOUS AND HAZARDOUS SUBSTANCE which should be handled by trained staff only.

Handling Advice: Avoid repeated freeze/thaw cycles.

Storage: -20 °C

Storage Comment: Store at -20°C.

Images



Western Blotting

Image 1.