



[Go to Product page](#)

Datasheet for ABIN3182724
anti-Cortactin antibody (pTyr466)

2 Images

Overview

Quantity:	100 µL
Target:	Cortactin (CTTN)
Binding Specificity:	pTyr466
Reactivity:	Human, Mouse, Rat, Monkey
Host:	Rabbit
Clonality:	Polyclonal
Conjugate:	This Cortactin antibody is un-conjugated
Application:	Western Blotting (WB), Immunohistochemistry (IHC), ELISA, Immunofluorescence (IF)

Product Details

Immunogen:	Synthesized peptide derived from human Cortactin around the phosphorylation site of Y466.
Isotype:	IgG
Specificity:	Phospho-Cortactin (Y466) Polyclonal Antibody detects endogenous levels of Cortactin protein only when phosphorylated at Y466.
Characteristics:	Rabbit Polyclonal to Phospho-Cortactin (Y466).
Purification:	The antibody was affinity-purified from rabbit antiserum by affinity-chromatography using epitope-specific immunogen.

Target Details

Target:	Cortactin (CTTN)
---------	------------------

Target Details

Alternative Name: Cortactin ([CTTN Products](#))

Molecular Weight: 85/68/80 kDa

Gene ID: 13043

UniProt: [Q14247](#)

Pathways: [MAPK Signaling](#)

Application Details

Application Notes: WB 1:500-1:2000, IHC 1:100-1:300, IF 1:200-1:1000, ELISA 1:20000,

Restrictions: For Research Use only

Handling

Format: Liquid

Concentration: 1 mg/mL

Buffer: Liquid in PBS containing 50 % glycerol, 0.5 % BSA and 0.02 % sodium azide.

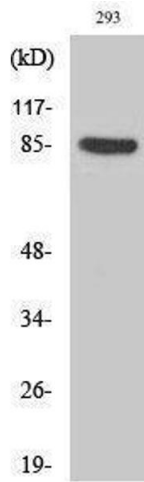
Preservative: Sodium azide

Precaution of Use: This product contains Sodium azide: a POISONOUS AND HAZARDOUS SUBSTANCE which should be handled by trained staff only.

Handling Advice: Avoid repeated freeze/thaw cycles.

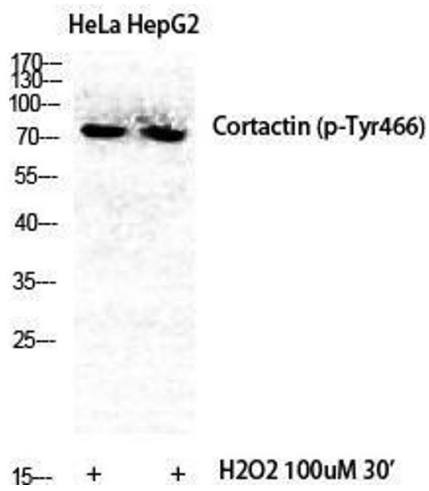
Storage: -20 °C

Storage Comment: Store at -20°C.



Western Blotting

Image 1.



Western Blotting

Image 2. Western Blot (WB) analysis of specific cells using Phospho-Cortactin (Y466) Polyclonal Antibody.