



[Go to Product page](#)

Datasheet for ABIN3182744  
**anti-CROT antibody (pThr290)**

1 Image

Overview

Quantity:	100 µL
Target:	CROT
Binding Specificity:	pThr290
Reactivity:	Human, Mouse, Rat
Host:	Rabbit
Clonality:	Polyclonal
Conjugate:	This CROT antibody is un-conjugated
Application:	Western Blotting (WB), ELISA, Immunohistochemistry (IHC), Immunofluorescence (IF)

Product Details

Immunogen:	Synthesized peptide derived from human Cot around the phosphorylation site of T290.
Isotype:	IgG
Specificity:	Phospho-Cot (T290) Polyclonal Antibody detects endogenous levels of Cot protein only when phosphorylated at T290.
Characteristics:	Rabbit Polyclonal to Phospho-Cot (T290).
Purification:	The antibody was affinity-purified from rabbit antiserum by affinity-chromatography using epitope-specific immunogen.

Target Details

Target:	CROT
---------	------

## Target Details

---

Alternative Name:	Cot ( <a href="#">CROT Products</a> )
Molecular Weight:	60 kDa
Gene ID:	1326
UniProt:	<a href="#">P41279</a>
Pathways:	<a href="#">Monocarboxylic Acid Catabolic Process</a>

## Application Details

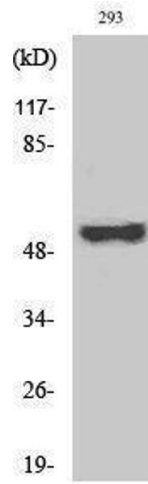
---

Application Notes:	WB 1:500-1:2000, IHC 1:100-1:300, IF 1:200-1:1000, ELISA 1:40000,
Restrictions:	For Research Use only

## Handling

---

Format:	Liquid
Concentration:	1 mg/mL
Buffer:	Liquid in PBS containing 50 % glycerol, 0.5 % BSA and 0.02 % sodium azide.
Preservative:	Sodium azide
Precaution of Use:	This product contains Sodium azide: a POISONOUS AND HAZARDOUS SUBSTANCE which should be handled by trained staff only.
Handling Advice:	Avoid repeated freeze/thaw cycles.
Storage:	-20 °C
Storage Comment:	Store at -20°C.



### Western Blotting

Image 1.