

Datasheet for ABIN3182746
anti-CrkL antibody (pTyr207)[Go to Product page](#)

1 Image

Overview

Quantity:	100 µL
Target:	CrkL (CRKL)
Binding Specificity:	pTyr207
Reactivity:	Human, Mouse, Rat, Monkey
Host:	Rabbit
Clonality:	Polyclonal
Conjugate:	This CrkL antibody is un-conjugated
Application:	Western Blotting (WB), ELISA, Immunohistochemistry (IHC), Immunofluorescence (IF)

Product Details

Immunogen:	Synthesized peptide derived from human Crk-L around the phosphorylation site of Y207.
Isotype:	IgG
Specificity:	Phospho-Crk-L (Y207) Polyclonal Antibody detects endogenous levels of Crk-L protein only when phosphorylated at Y207.
Characteristics:	Rabbit Polyclonal to Phospho-Crk-L (Y207).
Purification:	The antibody was affinity-purified from rabbit antiserum by affinity-chromatography using epitope-specific immunogen.

Target Details

Target:	CrkL (CRKL)
---------	-------------

Target Details

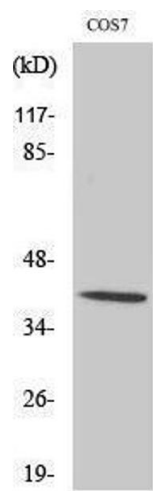
Alternative Name:	Crk-L (CRKL Products)
Molecular Weight:	39 kDa
Gene ID:	1399
UniProt:	P46109
Pathways:	Interferon-gamma Pathway , Neurotrophin Signaling Pathway , Signaling of Hepatocyte Growth Factor Receptor

Application Details

Application Notes:	WB 1:500-1:2000, IHC 1:100-1:300, IF 1:200-1:1000, ELISA 1:5000,
Restrictions:	For Research Use only

Handling

Format:	Liquid
Concentration:	1 mg/mL
Buffer:	Liquid in PBS containing 50 % glycerol, 0.5 % BSA and 0.02 % sodium azide.
Preservative:	Sodium azide
Precaution of Use:	This product contains Sodium azide: a POISONOUS AND HAZARDOUS SUBSTANCE which should be handled by trained staff only.
Handling Advice:	Avoid repeated freeze/thaw cycles.
Storage:	-20 °C
Storage Comment:	Store at -20°C.



Western Blotting

Image 1.