



Datasheet for ABIN3182780
anti-14-3-3 theta antibody (pSer232)



[Go to Product page](#)

1 Image

Overview

Quantity:	100 µL
Target:	14-3-3 theta (YWHAQ)
Binding Specificity:	pSer232
Reactivity:	Human, Mouse, Rat
Host:	Rabbit
Clonality:	Polyclonal
Conjugate:	This 14-3-3 theta antibody is un-conjugated
Application:	Western Blotting (WB), ELISA, Immunohistochemistry (IHC), Immunofluorescence (IF)

Product Details

Immunogen:	Synthesized peptide derived from human 14-3-3 theta/tau around the phosphorylation site of S232.
Isotype:	IgG
Specificity:	Phospho-14-3-3 θ/τ (S232) Polyclonal Antibody detects endogenous levels of 14-3-3 θ/τ protein only when phosphorylated at S232.
Characteristics:	Rabbit Polyclonal to Phospho-14-3-3 θ/τ (S232).
Purification:	The antibody was affinity-purified from rabbit antiserum by affinity-chromatography using epitope-specific immunogen.

Target Details

Target:	14-3-3 theta (YWHAQ)
---------	----------------------

Target Details

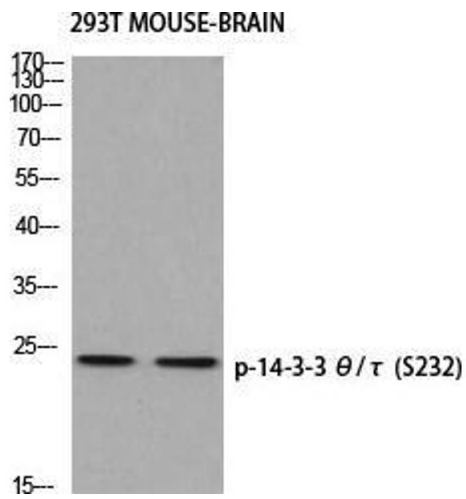
Alternative Name:	14-3-3 theta/tau (YWHAQ Products)
Molecular Weight:	28 kDa
Gene ID:	5350
UniProt:	P27348
Pathways:	Apoptosis , Myometrial Relaxation and Contraction

Application Details

Application Notes:	WB 1:500-1:2000, IHC 1:100-1:300, IF 1:200-1:1000, ELISA 1:5000,
Restrictions:	For Research Use only

Handling

Format:	Liquid
Concentration:	1 mg/mL
Buffer:	Liquid in PBS containing 50 % glycerol, 0.5 % BSA and 0.02 % sodium azide.
Preservative:	Sodium azide
Precaution of Use:	This product contains Sodium azide: a POISONOUS AND HAZARDOUS SUBSTANCE which should be handled by trained staff only.
Handling Advice:	Avoid repeated freeze/thaw cycles.
Storage:	-20 °C
Storage Comment:	Store at -20°C.



Western Blotting

Image 1. Western Blot (WB) analysis of 293T Mouse Brain using p-14-3-3 theta/tau (S232) antibody.