



[Go to Product page](#)

Datasheet for ABIN3182796  
**anti-CTNND1 antibody (pTyr228)**

2 Images

Overview

Quantity:	100 µL
Target:	CTNND1
Binding Specificity:	pTyr228
Reactivity:	Human, Mouse, Rat
Host:	Rabbit
Clonality:	Polyclonal
Conjugate:	This CTNND1 antibody is un-conjugated
Application:	Western Blotting (WB), ELISA, Immunohistochemistry (IHC), Immunofluorescence (IF)

Product Details

Immunogen:	Synthesized peptide derived from human p120 around the phosphorylation site of Y228.
Isotype:	IgG
Specificity:	Phospho-p120 (Y228) Polyclonal Antibody detects endogenous levels of p120 protein only when phosphorylated at Y228.
Characteristics:	Rabbit Polyclonal to Phospho-p120 (Y228).
Purification:	The antibody was affinity-purified from rabbit antiserum by affinity-chromatography using epitope-specific immunogen.

Target Details

Target:	CTNND1
---------	--------

## Target Details

---

Alternative Name: p120 ([CTNND1 Products](#))

Molecular Weight: 108 kDa

Gene ID: 1500

UniProt: [O60716](#)

Pathways: [EGFR Signaling Pathway](#), [Neurotrophin Signaling Pathway](#), [Cell-Cell Junction Organization](#), [CXCR4-mediated Signaling Events](#), [Platelet-derived growth Factor Receptor Signaling](#)

## Application Details

---

Application Notes: WB 1:500-1:2000, IHC 1:100-1:300, IF 1:200-1:1000, ELISA 1:10000,

Restrictions: For Research Use only

## Handling

---

Format: Liquid

Concentration: 1 mg/mL

Buffer: Liquid in PBS containing 50 % glycerol, 0.5 % BSA and 0.02 % sodium azide.

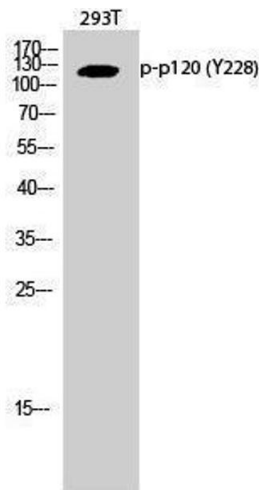
Preservative: Sodium azide

Precaution of Use: This product contains Sodium azide: a POISONOUS AND HAZARDOUS SUBSTANCE which should be handled by trained staff only.

Handling Advice: Avoid repeated freeze/thaw cycles.

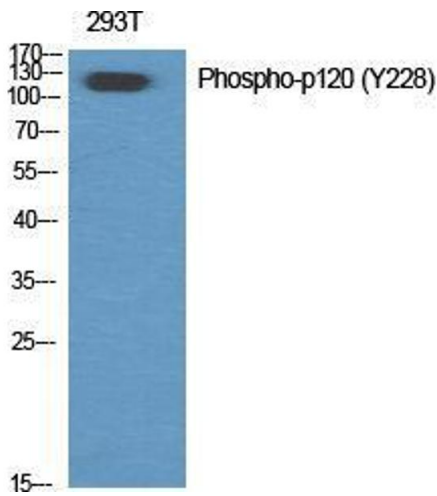
Storage: -20 °C

Storage Comment: Store at -20°C.



### Western Blotting

**Image 1.**



### Western Blotting

**Image 2.** Western Blot (WB) analysis of specific cells using Phospho-p120 (Y228) Polyclonal Antibody.