

Datasheet for ABIN3182802
anti-Histone H1 antibody (pThr17)



[Go to Product page](#)

1 Image

Overview

Quantity:	100 µL
Target:	Histone H1
Binding Specificity:	pThr17
Reactivity:	Human, Mouse, Monkey
Host:	Rabbit
Clonality:	Polyclonal
Conjugate:	This Histone H1 antibody is un-conjugated
Application:	Immunofluorescence (IF), Immunohistochemistry (IHC), Western Blotting (WB), ELISA

Product Details

Immunogen:	Synthesized peptide derived from human Histone H1 around the phosphorylation site of T17.
Isotype:	IgG
Specificity:	Phospho-Histone H1 (T17) Polyclonal Antibody detects endogenous levels of Histone H1 protein only when phosphorylated at T17.
Characteristics:	Rabbit Polyclonal to Phospho-Histone H1 (T17).
Purification:	The antibody was affinity-purified from rabbit antiserum by affinity-chromatography using epitope-specific immunogen.

Target Details

Target:	Histone H1
---------	------------

Target Details

Abstract:	Histone H1 Products
Molecular Weight:	31 kDa
Gene ID:	3009, 3007, 3008
UniProt:	P16401 , P16402 , P10412

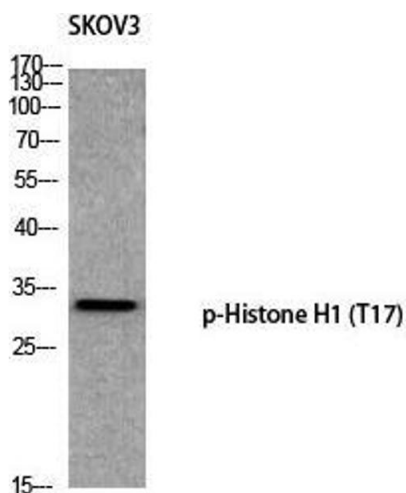
Application Details

Application Notes:	WB 1:500-1:2000, IHC 1:100-1:300, IF 1:200-1:1000, ELISA 1:10000,
Restrictions:	For Research Use only

Handling

Format:	Liquid
Concentration:	1 mg/mL
Buffer:	Liquid in PBS containing 50 % glycerol, 0.5 % BSA and 0.02 % sodium azide.
Preservative:	Sodium azide
Precaution of Use:	This product contains Sodium azide: a POISONOUS AND HAZARDOUS SUBSTANCE which should be handled by trained staff only.
Handling Advice:	Avoid repeated freeze/thaw cycles.
Storage:	-20 °C
Storage Comment:	Store at -20°C.

Images



Western Blotting

Image 1. Western Blot (WB) analysis of SKOV3 using p-Histone H1 (T17) antibody.