

Datasheet for ABIN3182878
anti-SLC22A3 antibody (pTyr512)[Go to Product page](#)

1 Image

Overview

Quantity:	100 µL
Target:	SLC22A3 (OCT3)
Binding Specificity:	pTyr512
Reactivity:	Human, Mouse
Host:	Rabbit
Clonality:	Polyclonal
Conjugate:	This SLC22A3 antibody is un-conjugated
Application:	ELISA, Immunohistochemistry (IHC)

Product Details

Immunogen:	Synthesized peptide derived from human Emt around the phosphorylation site of Y512.
Isotype:	IgG
Specificity:	Phospho-Emt (Y512) Polyclonal Antibody detects endogenous levels of Emt protein only when phosphorylated at Y512.
Characteristics:	Rabbit Polyclonal to Phospho-Emt (Y512).
Purification:	The antibody was affinity-purified from rabbit antiserum by affinity-chromatography using epitope-specific immunogen.

Target Details

Target:	SLC22A3 (OCT3)
---------	----------------

Target Details

Alternative Name:	Emt (OCT3 Products)
Molecular Weight:	72 kDa
Gene ID:	3702
UniProt:	Q08881

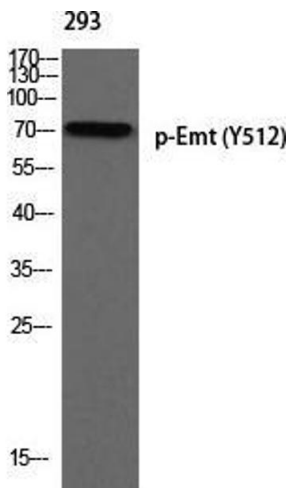
Application Details

Application Notes:	IHC 1:100-1:300, ELISA 1:5000,
Restrictions:	For Research Use only

Handling

Format:	Liquid
Concentration:	1 mg/mL
Buffer:	Liquid in PBS containing 50 % glycerol, 0.5 % BSA and 0.02 % sodium azide.
Preservative:	Sodium azide
Precaution of Use:	This product contains Sodium azide: a POISONOUS AND HAZARDOUS SUBSTANCE which should be handled by trained staff only.
Handling Advice:	Avoid repeated freeze/thaw cycles.
Storage:	-20 °C
Storage Comment:	Store at -20°C.

Images



Western Blotting

Image 1. Western Blot (WB) analysis of 293 using p-Emt (Y512) antibody.