

Datasheet for ABIN3183061
anti-S1PR1 antibody (pThr236)[Go to Product page](#)

1 Image

Overview

Quantity:	100 µL
Target:	S1PR1
Binding Specificity:	pThr236
Reactivity:	Human, Mouse, Rat
Host:	Rabbit
Clonality:	Polyclonal
Conjugate:	This S1PR1 antibody is un-conjugated
Application:	ELISA, Immunofluorescence (IF)

Product Details

Immunogen:	Synthesized peptide derived from human EDG-1 around the phosphorylation site of T236.
Isotype:	IgG
Specificity:	Phospho-EDG-1 (T236) Polyclonal Antibody detects endogenous levels of EDG-1 protein only when phosphorylated at T236.
Characteristics:	Rabbit Polyclonal to Phospho-EDG-1 (T236).
Purification:	The antibody was affinity-purified from rabbit antiserum by affinity-chromatography using epitope-specific immunogen.

Target Details

Target:	S1PR1
---------	-------

Target Details

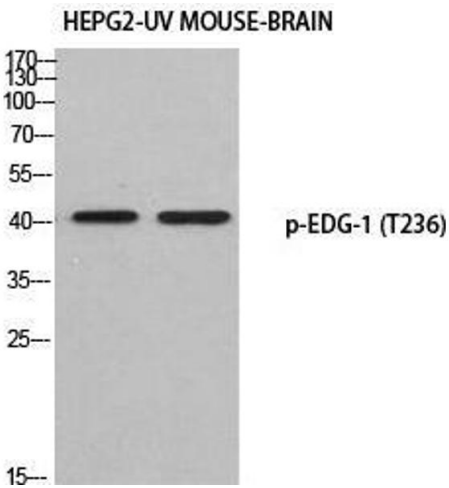
Alternative Name:	EDG-1 (S1PR1 Products)
Molecular Weight:	43 kDa
Gene ID:	1901
UniProt:	P21453
Pathways:	Signaling Events mediated by VEGFR1 and VEGFR2

Application Details

Application Notes:	IF 1:200-1:1000, ELISA 1:10000,
Restrictions:	For Research Use only

Handling

Format:	Liquid
Concentration:	1 mg/mL
Buffer:	Liquid in PBS containing 50 % glycerol, 0.5 % BSA and 0.02 % sodium azide.
Preservative:	Sodium azide
Precaution of Use:	This product contains Sodium azide: a POISONOUS AND HAZARDOUS SUBSTANCE which should be handled by trained staff only.
Handling Advice:	Avoid repeated freeze/thaw cycles.
Storage:	-20 °C
Storage Comment:	Store at -20°C.



Western Blotting

Image 1. Western Blot (WB) analysis of HepG2-UV Mouse Brain using p-EDG-1 (T236) antibody.