

Datasheet for ABIN3183068
anti-Leptin Receptor antibody (pTyr1141)



[Go to Product page](#)

1 Image

Overview

Quantity:	100 µL
Target:	Leptin Receptor (LEPR)
Binding Specificity:	pTyr1141
Reactivity:	Human, Mouse
Host:	Rabbit
Clonality:	Polyclonal
Conjugate:	This Leptin Receptor antibody is un-conjugated
Application:	Western Blotting (WB), ELISA

Product Details

Immunogen:	Synthesized peptide derived from human Ob-R around the phosphorylation site of Y1141.
Isotype:	IgG
Specificity:	Phospho-Ob-R (Y1141) Polyclonal Antibody detects endogenous levels of Ob-R protein only when phosphorylated at Y1141.
Characteristics:	Rabbit Polyclonal to Phospho-Ob-R (Y1141).
Purification:	The antibody was affinity-purified from rabbit antiserum by affinity-chromatography using epitope-specific immunogen.

Target Details

Target:	Leptin Receptor (LEPR)
---------	------------------------

Target Details

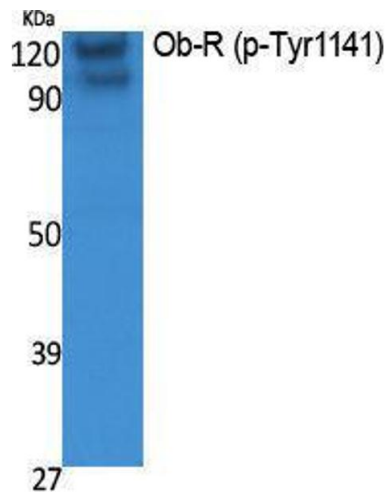
Alternative Name:	Ob-R (LEPR Products)
Molecular Weight:	130/50 kDa
Gene ID:	3953
UniProt:	P48357
Pathways:	JAK-STAT Signaling , AMPK Signaling , Feeding Behaviour

Application Details

Application Notes:	WB 1:500-1:2000, ELISA 1:5000,
Restrictions:	For Research Use only

Handling

Format:	Liquid
Concentration:	1 mg/mL
Buffer:	Liquid in PBS containing 50 % glycerol, 0.5 % BSA and 0.02 % sodium azide.
Preservative:	Sodium azide
Precaution of Use:	This product contains Sodium azide: a POISONOUS AND HAZARDOUS SUBSTANCE which should be handled by trained staff only.
Handling Advice:	Avoid repeated freeze/thaw cycles.
Storage:	-20 °C
Storage Comment:	Store at -20°C.



Western Blotting

Image 1.