

Datasheet for ABIN3183080
anti-14-3-3 zeta antibody (Tyr330)



[Go to Product page](#)

3 Images

Overview

Quantity:	100 µL
Target:	14-3-3 zeta (YWHAZ)
Binding Specificity:	Tyr330
Reactivity:	Human, Mouse, Rat
Host:	Rabbit
Clonality:	Polyclonal
Conjugate:	This 14-3-3 zeta antibody is un-conjugated
Application:	Western Blotting (WB), Immunohistochemistry (IHC), ELISA, Immunofluorescence (IF), Immunoprecipitation (IP)

Product Details

Immunogen:	Synthesized peptide derived from human 14-3-3 zeta around the non-phosphorylation site of S58.
Isotype:	IgG
Specificity:	14-3-3 ζ Polyclonal Antibody detects endogenous levels of 14-3-3 ζ protein.
Characteristics:	Rabbit Polyclonal to 14-3-3 ζ.
Purification:	The antibody was affinity-purified from rabbit antiserum by affinity-chromatography using epitope-specific immunogen.

Target Details

Target:	14-3-3 zeta (YWHAZ)
---------	---------------------

Target Details

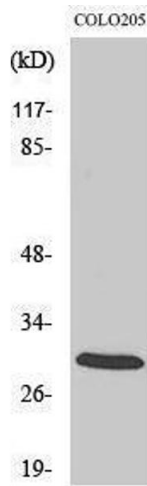
Alternative Name:	14-3-3 zeta (YWHAZ Products)
Molecular Weight:	59 kDa
Gene ID:	7534
UniProt:	P63104
Pathways:	Apoptosis , Hormone Transport , Myometrial Relaxation and Contraction , Regulation of Leukocyte Mediated Immunity , Positive Regulation of Immune Effector Process , Synaptic Membrane , Production of Molecular Mediator of Immune Response , Maintenance of Protein Location

Application Details

Application Notes:	WB 1:500-1:2000, IHC 1:100-1:300, IP 1:200-500, IF 1:200-1:1000, ELISA 1:40000,
Restrictions:	For Research Use only

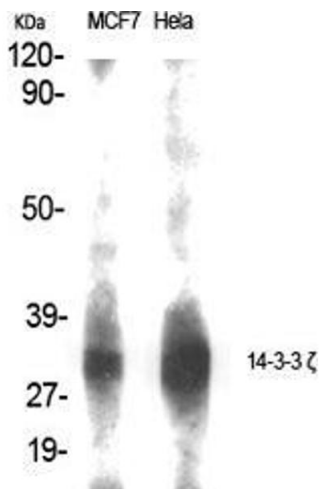
Handling

Format:	Liquid
Concentration:	1 mg/mL
Buffer:	Liquid in PBS containing 50 % glycerol, 0.5 % BSA and 0.02 % sodium azide.
Preservative:	Sodium azide
Precaution of Use:	This product contains Sodium azide: a POISONOUS AND HAZARDOUS SUBSTANCE which should be handled by trained staff only.
Handling Advice:	Avoid repeated freeze/thaw cycles.
Storage:	-20 °C
Storage Comment:	Store at -20°C.



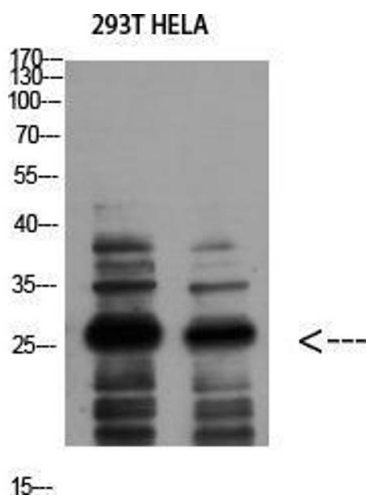
Western Blotting

Image 1.



Western Blotting

Image 2. Western Blot (WB) analysis of specific cells using 14-3-3 zeta Polyclonal Antibody.



Western Blotting

Image 3. Western Blot (WB) analysis of 293T HeLa using 14-3-3 zeta Polyclonal Antibody diluted at 1:1000.