



[Go to Product page](#)

Datasheet for ABIN3183142

## anti-Acetyl-CoA Carboxylase alpha antibody (Ser122)

### 2 Images

#### Overview

Quantity:	100 µL
Target:	Acetyl-CoA Carboxylase alpha (ACACA)
Binding Specificity:	Ser122
Reactivity:	Human, Rat, Mouse
Host:	Rabbit
Clonality:	Polyclonal
Conjugate:	This Acetyl-CoA Carboxylase alpha antibody is un-conjugated
Application:	Western Blotting (WB), ELISA, Immunohistochemistry (IHC)

#### Product Details

Immunogen:	Synthesized peptide derived from human ACCalpha around the non-phosphorylation site of S80.
Isotype:	IgG
Specificity:	ACCa Polyclonal Antibody detects endogenous levels of ACCa protein.
Characteristics:	Rabbit Polyclonal to ACCa.
Purification:	The antibody was affinity-purified from rabbit antiserum by affinity-chromatography using epitope-specific immunogen.

#### Target Details

Target:	Acetyl-CoA Carboxylase alpha (ACACA)
---------	--------------------------------------

## Target Details

---

Alternative Name:	ACCalpha ( <a href="#">ACACA Products</a> )
Molecular Weight:	45 kDa
Gene ID:	31
UniProt:	<a href="#">Q13085</a>
Pathways:	<a href="#">AMPK Signaling</a> , <a href="#">Ribonucleoside Biosynthetic Process</a> , <a href="#">Warburg Effect</a>

## Application Details

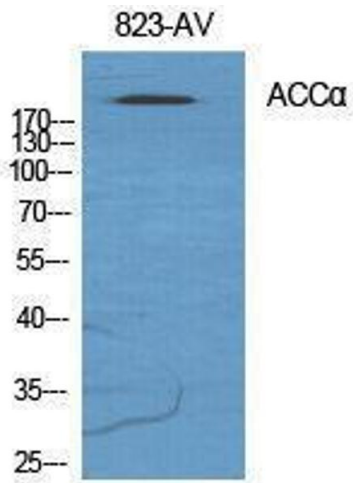
---

Application Notes:	WB 1:500-1:2000, IHC 1:100-1:300, ELISA 1:5000,
Restrictions:	For Research Use only

## Handling

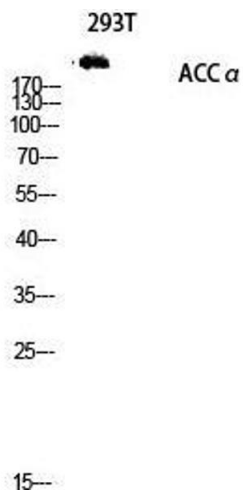
---

Format:	Liquid
Concentration:	1 mg/mL
Buffer:	Liquid in PBS containing 50 % glycerol, 0.5 % BSA and 0.02 % sodium azide.
Preservative:	Sodium azide
Precaution of Use:	This product contains Sodium azide: a POISONOUS AND HAZARDOUS SUBSTANCE which should be handled by trained staff only.
Handling Advice:	Avoid repeated freeze/thaw cycles.
Storage:	-20 °C
Storage Comment:	Store at -20°C.



### Western Blotting

Image 1.



### Western Blotting

Image 2. Western Blot (WB) analysis of 293T lysis using ACC $\alpha$  antibody.