

Datasheet for ABIN3183157
anti-Actin antibody (C-Term)[Go to Product page](#)

4 Images

Overview

Quantity:	100 µL
Target:	Actin
Binding Specificity:	C-Term
Reactivity:	Human, Rat, Mouse
Host:	Rabbit
Clonality:	Polyclonal
Conjugate:	This Actin antibody is un-conjugated
Application:	Western Blotting (WB), Immunohistochemistry (IHC), ELISA

Product Details

Immunogen:	Synthesized peptide derived from the C-terminal region of human Actin.
Isotype:	IgG
Specificity:	Actin Polyclonal Antibody detects endogenous levels of Actin protein.
Characteristics:	Rabbit Polyclonal to Actin.
Purification:	The antibody was affinity-purified from rabbit antiserum by affinity-chromatography using epitope-specific immunogen.

Target Details

Target:	Actin
Abstract:	Actin Products

Target Details

Molecular Weight:	45 kDa
Gene ID:	60, 71
UniProt:	P60709 , Q9BYX7 , P63261

Application Details

Application Notes:	WB 1:500-1:2000, IHC 1:100-1:300, ELISA 1:10000,
Restrictions:	For Research Use only

Handling

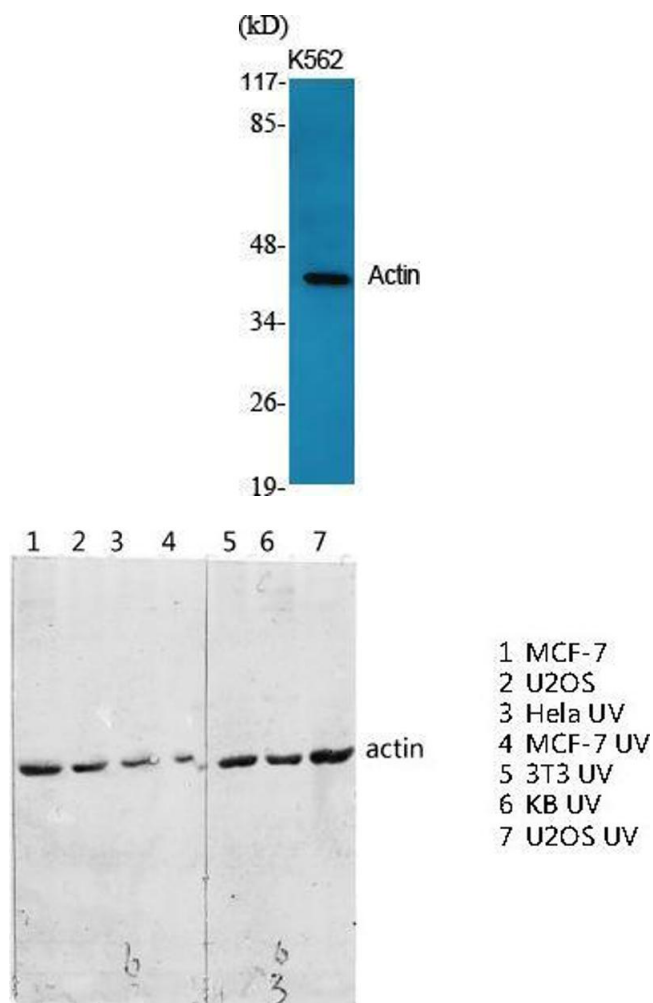
Format:	Liquid
Concentration:	1 mg/mL
Buffer:	Liquid in PBS containing 50 % glycerol, 0.5 % BSA and 0.02 % sodium azide.
Preservative:	Sodium azide
Precaution of Use:	This product contains Sodium azide: a POISONOUS AND HAZARDOUS SUBSTANCE which should be handled by trained staff only.
Handling Advice:	Avoid repeated freeze/thaw cycles.
Storage:	-20 °C
Storage Comment:	Store at -20°C.

Images



Western Blotting

Image 1.



Western Blotting

Image 2. Western Blot (WB) analysis of specific cells using Actin Polyclonal Antibody.

Western Blotting

Image 3. Western Blot (WB) analysis of specific lysis using Actin Polyclonal Antibody.

Please check the [product details page](#) for more images. Overall 4 images are available for ABIN3183157.