



[Go to Product page](#)

Datasheet for ABIN3183162

## anti-ACTN1/2/3/4 antibody (N-Term)

### 2 Images

#### Overview

Quantity:	100 µL
Target:	ACTN1/2/3/4 (ACTN1/ACTN2/ACTN3/ACTN4)
Binding Specificity:	N-Term
Reactivity:	Human, Mouse, Rat
Host:	Rabbit
Clonality:	Polyclonal
Conjugate:	This ACTN1/2/3/4 antibody is un-conjugated
Application:	Western Blotting (WB), ELISA, Immunohistochemistry (IHC)

#### Product Details

Immunogen:	Synthesized peptide derived from the N-terminal region of human Actinin-alpha1/2/3/4.
Isotype:	IgG
Specificity:	Actinin-α1/2/3/4 Polyclonal Antibody detects endogenous levels of Actinin-α1/2/3/4 protein.
Characteristics:	Rabbit Polyclonal to Actinin-α1/2/3/4.
Purification:	The antibody was affinity-purified from rabbit antiserum by affinity-chromatography using epitope-specific immunogen.

#### Target Details

Target:	ACTN1/2/3/4 (ACTN1/ACTN2/ACTN3/ACTN4)
Alternative Name:	Actinin-Alpha1/2/3/4 ( <a href="#">ACTN1/ACTN2/ACTN3/ACTN4 Products</a> )

## Target Details

Molecular Weight:	75 kDa
Gene ID:	87, 88, 89
UniProt:	<a href="#">P12814</a> , <a href="#">P35609</a> , <a href="#">Q08043</a> , <a href="#">O43707</a>

## Application Details

Application Notes:	WB 1:500-1:2000, IHC 1:100-1:300, ELISA 1:20000,
Restrictions:	For Research Use only

## Handling

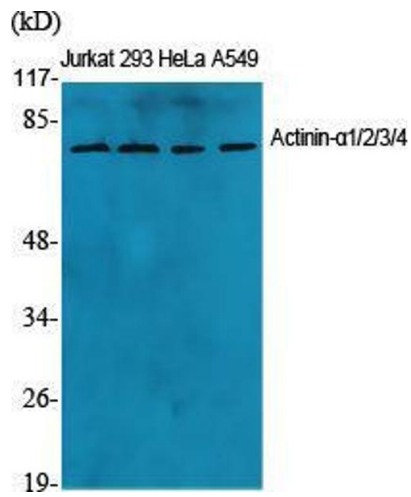
Format:	Liquid
Concentration:	1 mg/mL
Buffer:	Liquid in PBS containing 50 % glycerol, 0.5 % BSA and 0.02 % sodium azide.
Preservative:	Sodium azide
Precaution of Use:	This product contains Sodium azide: a POISONOUS AND HAZARDOUS SUBSTANCE which should be handled by trained staff only.
Handling Advice:	Avoid repeated freeze/thaw cycles.
Storage:	-20 °C
Storage Comment:	Store at -20°C.

## Images



### Western Blotting

Image 1.



### Western Blotting

**Image 2.** Western Blot (WB) analysis of specific cells using Actinin-alpha1/2/3/4 Polyclonal Antibody.