

Datasheet for ABIN3183329  
**anti-APOOL antibody (C-Term)**[Go to Product page](#)

## 1 Image

## Overview

Quantity:	100 µL
Target:	APOOL
Binding Specificity:	C-Term
Reactivity:	Human, Mouse, Rat
Host:	Rabbit
Clonality:	Polyclonal
Conjugate:	This APOOL antibody is un-conjugated
Application:	ELISA, Western Blotting (WB)

## Product Details

Immunogen:	Synthesized peptide derived from the C-terminal region of human ApoOL.
Isotype:	IgG
Specificity:	ApoOL Polyclonal Antibody detects endogenous levels of ApoOL protein.
Characteristics:	Rabbit Polyclonal to ApoOL.
Purification:	The antibody was affinity-purified from rabbit antiserum by affinity-chromatography using epitope-specific immunogen.

## Target Details

Target:	APOOL
Alternative Name:	ApoOL ( <a href="#">APOOL Products</a> )

### Target Details

Molecular Weight:	30 kDa
Gene ID:	139322
UniProt:	<a href="#">Q6UXV4</a>

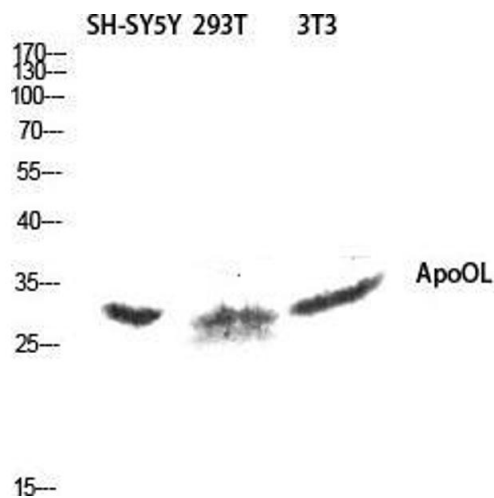
### Application Details

Application Notes:	WB 1:500-1:2000, ELISA 1:40000,
Restrictions:	For Research Use only

### Handling

Format:	Liquid
Concentration:	1 mg/mL
Buffer:	Liquid in PBS containing 50 % glycerol, 0.5 % BSA and 0.02 % sodium azide.
Preservative:	Sodium azide
Precaution of Use:	This product contains Sodium azide: a POISONOUS AND HAZARDOUS SUBSTANCE which should be handled by trained staff only.
Handling Advice:	Avoid repeated freeze/thaw cycles.
Storage:	-20 °C
Storage Comment:	Store at -20°C.

### Images



#### Western Blotting

**Image 1.** Western Blot (WB) analysis of SH-SY5Y 293T 3T3 lysis using ApoOL antibody.