



[Go to Product page](#)

Datasheet for ABIN3183345  
**anti-ARAF antibody (Internal Region)**

1 Image

### Overview

Quantity:	100 µL
Target:	ARAF
Binding Specificity:	Internal Region
Reactivity:	Human, Mouse, Rat, Monkey
Host:	Rabbit
Clonality:	Polyclonal
Conjugate:	This ARAF antibody is un-conjugated
Application:	Western Blotting (WB), ELISA

### Product Details

Immunogen:	Synthesized peptide derived from the Internal region of human A-Raf.
Isotype:	IgG
Specificity:	A-Raf Polyclonal Antibody detects endogenous levels of A-Raf protein.
Characteristics:	Rabbit Polyclonal to A-Raf.
Purification:	The antibody was affinity-purified from rabbit antiserum by affinity-chromatography using epitope-specific immunogen.

### Target Details

Target:	ARAF
Alternative Name:	A-Raf ( <a href="#">ARAF Products</a> )

## Target Details

Molecular Weight:	68 kDa
Gene ID:	369
UniProt:	<a href="#">P10398</a>
Pathways:	<a href="#">MAPK Signaling</a> , <a href="#">RTK Signaling</a> , <a href="#">Hepatitis C</a>

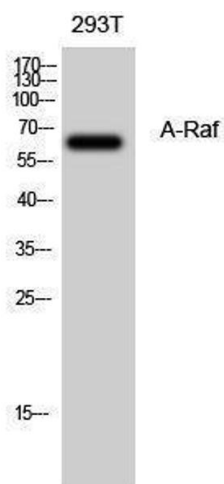
## Application Details

Application Notes:	WB 1:500-1:2000, ELISA 1:20000,
Restrictions:	For Research Use only

## Handling

Format:	Liquid
Concentration:	1 mg/mL
Buffer:	Liquid in PBS containing 50 % glycerol, 0.5 % BSA and 0.02 % sodium azide.
Preservative:	Sodium azide
Precaution of Use:	This product contains Sodium azide: a POISONOUS AND HAZARDOUS SUBSTANCE which should be handled by trained staff only.
Handling Advice:	Avoid repeated freeze/thaw cycles.
Storage:	-20 °C
Storage Comment:	Store at -20°C.

## Images



### Western Blotting

Image 1.