



[Go to Product page](#)

Datasheet for ABIN3183391
anti-Arylsulfatase K antibody

1 Image

Overview

Quantity:	100 µL
Target:	Arylsulfatase K (ARSK)
Reactivity:	Human, Mouse, Rat
Host:	Rabbit
Clonality:	Polyclonal
Conjugate:	This Arylsulfatase K antibody is un-conjugated
Application:	ELISA, Immunohistochemistry (IHC), Western Blotting (WB)

Product Details

Immunogen:	Synthesized peptide derived from the C-terminal region of human Arylsulfatase K.
Isotype:	IgG
Specificity:	Arylsulfatase K Polyclonal Antibody detects endogenous levels of Arylsulfatase K protein.
Characteristics:	Rabbit Polyclonal to Arylsulfatase K.
Purification:	The antibody was affinity-purified from rabbit antiserum by affinity-chromatography using epitope-specific immunogen.

Target Details

Target:	Arylsulfatase K (ARSK)
Alternative Name:	Arylsulfatase K (ARSK Products)
Molecular Weight:	62 kDa

Target Details

Gene ID: 153642

UniProt: [Q6UWY0](#)

Application Details

Application Notes: WB 1:500-1:2000, IHC 1:100-1:300, ELISA 1:20000,

Restrictions: For Research Use only

Handling

Format: Liquid

Concentration: 1 mg/mL

Buffer: Liquid in PBS containing 50 % glycerol, 0.5 % BSA and 0.02 % sodium azide.

Preservative: Sodium azide

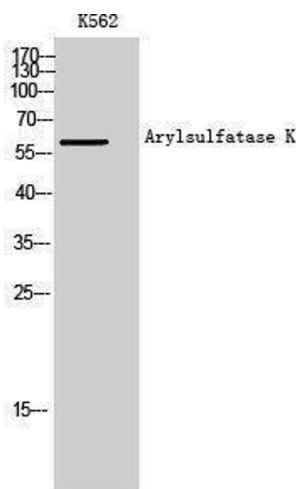
Precaution of Use: This product contains Sodium azide: a POISONOUS AND HAZARDOUS SUBSTANCE which should be handled by trained staff only.

Handling Advice: Avoid repeated freeze/thaw cycles.

Storage: -20 °C

Storage Comment: Store at -20°C.

Images



Western Blotting

Image 1.