

Datasheet for ABIN3183409
anti-AFT1 antibody (Ser157)[Go to Product page](#)

2 Images

Overview

Quantity:	100 µL
Target:	AFT1
Binding Specificity:	Ser157
Reactivity:	Human, Mouse
Host:	Rabbit
Clonality:	Polyclonal
Conjugate:	This AFT1 antibody is un-conjugated
Application:	Western Blotting (WB), ELISA, Immunohistochemistry (IHC)

Product Details

Immunogen:	Synthesized peptide derived from human ATF-1 around the non-phosphorylation site of S63.
Isotype:	IgG
Specificity:	ATF-1 Polyclonal Antibody detects endogenous levels of ATF-1 protein.
Characteristics:	Rabbit Polyclonal to ATF-1.
Purification:	The antibody was affinity-purified from rabbit antiserum by affinity-chromatography using epitope-specific immunogen.

Target Details

Target:	AFT1
Alternative Name:	ATF-1 (AFT1 Products)

Target Details

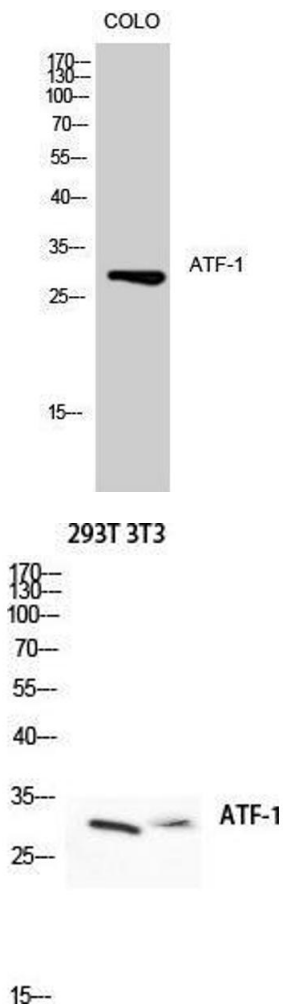
Molecular Weight:	46/50 kDa
Gene ID:	466
UniProt:	P18846
Pathways:	Neurotrophin Signaling Pathway , Activation of Innate immune Response , Myometrial Relaxation and Contraction , Toll-Like Receptors Cascades

Application Details

Application Notes:	WB 1:500-1:2000, IHC 1:100-1:300, ELISA 1:5000,
Restrictions:	For Research Use only

Handling

Format:	Liquid
Concentration:	1 mg/mL
Buffer:	Liquid in PBS containing 50 % glycerol, 0.5 % BSA and 0.02 % sodium azide.
Preservative:	Sodium azide
Precaution of Use:	This product contains Sodium azide: a POISONOUS AND HAZARDOUS SUBSTANCE which should be handled by trained staff only.
Handling Advice:	Avoid repeated freeze/thaw cycles.
Storage:	-20 °C
Storage Comment:	Store at -20°C.



Western Blotting

Image 1.

Western Blotting

Image 2. Western Blot (WB) analysis of 293T 3T3 lysis using ATF-1 antibody.