



[Go to Product page](#)

Datasheet for ABIN3183445  
**anti-ACLY antibody (Ser1227)**

2 Images

### Overview

Quantity:	100 µL
Target:	ACLY
Binding Specificity:	Ser1227
Reactivity:	Human, Mouse, Rat, Monkey
Host:	Rabbit
Clonality:	Polyclonal
Conjugate:	This ACLY antibody is un-conjugated
Application:	Western Blotting (WB), ELISA, Immunofluorescence (IF)

### Product Details

Immunogen:	Synthesized peptide derived from human ATP-citrate synthase around the non-phosphorylation site of S455.
Isotype:	IgG
Specificity:	ATP-citrate synthase Polyclonal Antibody detects endogenous levels of ATP-citrate synthase protein.
Characteristics:	Rabbit Polyclonal to ATP-citrate synthase.
Purification:	The antibody was affinity-purified from rabbit antiserum by affinity-chromatography using epitope-specific immunogen.

### Target Details

Target:	ACLY
---------	------

## Target Details

---

Alternative Name: ATP-Citrate Synthase ([ACLY Products](#))

Molecular Weight: 122 kDa

Gene ID: 47

UniProt: [P53396](#)

Pathways: [Warburg Effect](#)

## Application Details

---

Application Notes: WB 1:500-1:2000, IF 1:200-1:1000, ELISA 1:10000,

Restrictions: For Research Use only

## Handling

---

Format: Liquid

Concentration: 1 mg/mL

Buffer: Liquid in PBS containing 50 % glycerol, 0.5 % BSA and 0.02 % sodium azide.

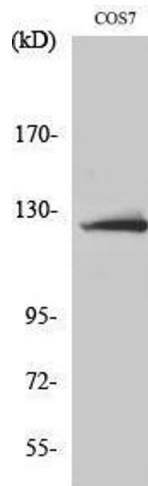
Preservative: Sodium azide

Precaution of Use: This product contains Sodium azide: a POISONOUS AND HAZARDOUS SUBSTANCE which should be handled by trained staff only.

Handling Advice: Avoid repeated freeze/thaw cycles.

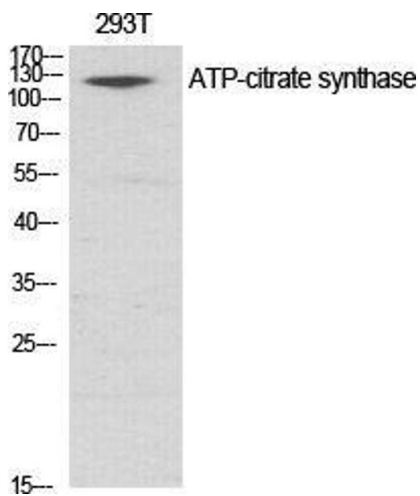
Storage: -20 °C

Storage Comment: Store at -20°C.



### Western Blotting

**Image 1.**



### Western Blotting

**Image 2.** Western Blot (WB) analysis of specific cells using ATP-citrate synthase Polyclonal Antibody.