



[Go to Product page](#)

Datasheet for ABIN3183446  
**anti-ATR antibody (Ser16)**

1 Image

### Overview

Quantity:	100 µL
Target:	ATR
Binding Specificity:	Ser16
Reactivity:	Human
Host:	Rabbit
Clonality:	Polyclonal
Conjugate:	This ATR antibody is un-conjugated
Application:	ELISA, Western Blotting (WB), Immunohistochemistry (IHC)

### Product Details

Immunogen:	Synthesized peptide derived from human ATR around the non-phosphorylation site of S428.
Isotype:	IgG
Specificity:	ATR Polyclonal Antibody detects endogenous levels of ATR protein.
Characteristics:	Rabbit Polyclonal to ATR.
Purification:	The antibody was affinity-purified from rabbit antiserum by affinity-chromatography using epitope-specific immunogen.

### Target Details

Target:	ATR
Alternative Name:	ATR ( <a href="#">ATR Products</a> )

## Target Details

Molecular Weight:	17 kDa
Gene ID:	545
UniProt:	<a href="#">Q13535</a>
Pathways:	<a href="#">Positive Regulation of Response to DNA Damage Stimulus</a>

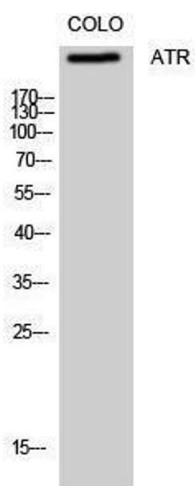
## Application Details

Application Notes:	WB 1:500-1:2000, IHC 1:100-1:300, ELISA 1:40000,
Restrictions:	For Research Use only

## Handling

Format:	Liquid
Concentration:	1 mg/mL
Buffer:	Liquid in PBS containing 50 % glycerol, 0.5 % BSA and 0.02 % sodium azide.
Preservative:	Sodium azide
Precaution of Use:	This product contains Sodium azide: a POISONOUS AND HAZARDOUS SUBSTANCE which should be handled by trained staff only.
Handling Advice:	Avoid repeated freeze/thaw cycles.
Storage:	-20 °C
Storage Comment:	Store at -20°C.

## Images



### Western Blotting

Image 1.