



Datasheet for ABIN3183447  
**anti-ATRIP antibody (Tyr783)**



[Go to Product page](#)

2 Images

Overview

Quantity:	100 µL
Target:	ATRIP
Binding Specificity:	Tyr783
Reactivity:	Human, Mouse, Rat
Host:	Rabbit
Clonality:	Polyclonal
Conjugate:	This ATRIP antibody is un-conjugated
Application:	Western Blotting (WB), ELISA, Immunohistochemistry (IHC), Immunofluorescence (IF)

Product Details

Immunogen:	Synthesized peptide derived from human ATRIP around the non-phosphorylation site of S68.
Isotype:	IgG
Specificity:	ATRIP Polyclonal Antibody detects endogenous levels of ATRIP protein.
Characteristics:	Rabbit Polyclonal to ATRIP.
Purification:	The antibody was affinity-purified from rabbit antiserum by affinity-chromatography using epitope-specific immunogen.

Target Details

Target:	ATRIP
Alternative Name:	ATRIP ( <a href="#">ATRIP Products</a> )

## Target Details

Molecular Weight: 150 kDa

Gene ID: 84126

UniProt: [Q8WXE1](#)

## Application Details

Application Notes: WB 1:500-1:2000, IHC 1:100-1:300, IF 1:200-1:1000, ELISA 1:5000,

Restrictions: For Research Use only

## Handling

Format: Liquid

Concentration: 1 mg/mL

Buffer: Liquid in PBS containing 50 % glycerol, 0.5 % BSA and 0.02 % sodium azide.

Preservative: Sodium azide

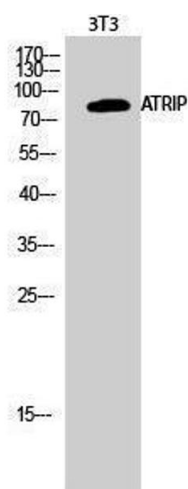
Precaution of Use: This product contains Sodium azide: a POISONOUS AND HAZARDOUS SUBSTANCE which should be handled by trained staff only.

Handling Advice: Avoid repeated freeze/thaw cycles.

Storage: -20 °C

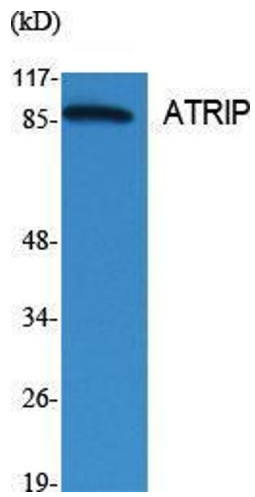
Storage Comment: Store at -20°C.

## Images



### Western Blotting

Image 1.



### Western Blotting

**Image 2.** Western Blot (WB) analysis of specific cells using ATRIP Polyclonal Antibody.