

Datasheet for ABIN3183509
anti-BCR antibody (Ser178)[Go to Product page](#)

1 Image

Overview

Quantity:	100 µL
Target:	BCR
Binding Specificity:	Ser178
Reactivity:	Human, Mouse
Host:	Rabbit
Clonality:	Polyclonal
Conjugate:	This BCR antibody is un-conjugated
Application:	Western Blotting (WB), Immunohistochemistry (IHC), ELISA

Product Details

Immunogen:	Synthesized peptide derived from human Bcr around the non-phosphorylation site of Y177.
Isotype:	IgG
Specificity:	Bcr Polyclonal Antibody detects endogenous levels of Bcr protein.
Characteristics:	Rabbit Polyclonal to Bcr.
Purification:	The antibody was affinity-purified from rabbit antiserum by affinity-chromatography using epitope-specific immunogen.

Target Details

Target:	BCR
Alternative Name:	Bcr (BCR Products)

Target Details

Molecular Weight:	49 kDa
Gene ID:	613
UniProt:	P11274
Pathways:	Regulation of Leukocyte Mediated Immunity , Platelet-derived growth Factor Receptor Signaling

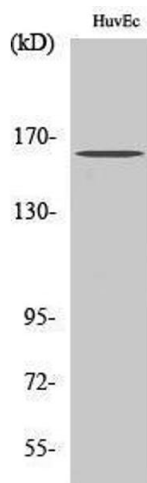
Application Details

Application Notes:	WB 1:500-1:2000, IHC 1:100-1:300, ELISA 1:20000,
Restrictions:	For Research Use only

Handling

Format:	Liquid
Concentration:	1 mg/mL
Buffer:	Liquid in PBS containing 50 % glycerol, 0.5 % BSA and 0.02 % sodium azide.
Preservative:	Sodium azide
Precaution of Use:	This product contains Sodium azide: a POISONOUS AND HAZARDOUS SUBSTANCE which should be handled by trained staff only.
Handling Advice:	Avoid repeated freeze/thaw cycles.
Storage:	-20 °C
Storage Comment:	Store at -20°C.

Images



Western Blotting

Image 1.