

Datasheet for ABIN3183533  
**anti-BMX antibody (Ser182)**



[Go to Product page](#)

1 Image

## Overview

Quantity:	100 µL
Target:	BMX
Binding Specificity:	Ser182
Reactivity:	Human, Mouse
Host:	Rabbit
Clonality:	Polyclonal
Conjugate:	This BMX antibody is un-conjugated
Application:	Western Blotting (WB), Immunohistochemistry (IHC), ELISA, Immunofluorescence (IF)

## Product Details

Immunogen:	Synthesized peptide derived from human Bmx around the non-phosphorylation site of Y566.
Isotype:	IgG
Specificity:	Bmx Polyclonal Antibody detects endogenous levels of Bmx protein.
Characteristics:	Rabbit Polyclonal to Bmx.
Purification:	The antibody was affinity-purified from rabbit antiserum by affinity-chromatography using epitope-specific immunogen.

## Target Details

Target:	BMX
Alternative Name:	Bmx ( <a href="#">BMX Products</a> )

Target Details

Molecular Weight:	38 kDa
Gene ID:	660
UniProt:	<a href="#">P51813</a>

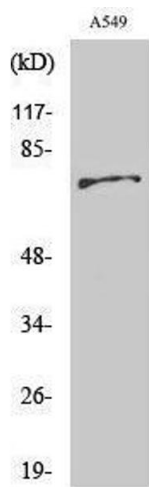
Application Details

Application Notes:	WB 1:500-1:2000, IHC 1:100-1:300, IF 1:200-1:1000, ELISA 1:10000,
Restrictions:	For Research Use only

Handling

Format:	Liquid
Concentration:	1 mg/mL
Buffer:	Liquid in PBS containing 50 % glycerol, 0.5 % BSA and 0.02 % sodium azide.
Preservative:	Sodium azide
Precaution of Use:	This product contains Sodium azide: a POISONOUS AND HAZARDOUS SUBSTANCE which should be handled by trained staff only.
Handling Advice:	Avoid repeated freeze/thaw cycles.
Storage:	-20 °C
Storage Comment:	Store at -20°C.

Images



Western Blotting

Image 1.