

Datasheet for ABIN3183577  
**anti-CEBPB antibody (Ser243)**



[Go to Product page](#)

1 Image

## Overview

Quantity:	100 µL
Target:	CEBPB
Binding Specificity:	Ser243
Reactivity:	Human, Mouse, Rat
Host:	Rabbit
Clonality:	Polyclonal
Conjugate:	This CEBPB antibody is un-conjugated
Application:	Western Blotting (WB), ELISA, Immunohistochemistry (IHC)

## Product Details

Immunogen:	Synthesized peptide derived from human C/EBP beta around the non-phosphorylation site of T235.
Isotype:	IgG
Specificity:	C/EBP β Polyclonal Antibody detects endogenous levels of C/EBP β protein.
Characteristics:	Rabbit Polyclonal to C/EBP β.
Purification:	The antibody was affinity-purified from rabbit antiserum by affinity-chromatography using epitope-specific immunogen.

## Target Details

Target:	CEBPB
---------	-------

## Target Details

---

Alternative Name:	<a href="#">C/EBP beta (CEBPB Products)</a>
Molecular Weight:	36 kDa
Gene ID:	1051
UniProt:	<a href="#">P17676</a>
Pathways:	<a href="#">Interferon-gamma Pathway</a> , <a href="#">Autophagy</a> , <a href="#">Brown Fat Cell Differentiation</a>

## Application Details

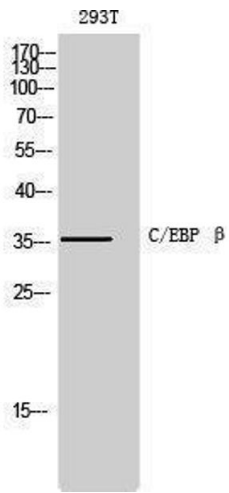
---

Application Notes:	WB 1:500-1:2000, IHC 1:100-1:300, ELISA 1:10000,
Restrictions:	For Research Use only

## Handling

---

Format:	Liquid
Concentration:	1 mg/mL
Buffer:	Liquid in PBS containing 50 % glycerol, 0.5 % BSA and 0.02 % sodium azide.
Preservative:	Sodium azide
Precaution of Use:	This product contains Sodium azide: a POISONOUS AND HAZARDOUS SUBSTANCE which should be handled by trained staff only.
Handling Advice:	Avoid repeated freeze/thaw cycles.
Storage:	-20 °C
Storage Comment:	Store at -20°C.



### Western Blotting

Image 1.