

Datasheet for ABIN3183602  
**anti-ABL1 antibody (Ser12)**



[Go to Product page](#)

2 Images

## Overview

Quantity:	100 µL
Target:	ABL1
Binding Specificity:	Ser12
Reactivity:	Human, Mouse, Rat, Monkey
Host:	Rabbit
Clonality:	Polyclonal
Conjugate:	This ABL1 antibody is un-conjugated
Application:	Western Blotting (WB), ELISA, Immunohistochemistry (IHC)

## Product Details

Immunogen:	Synthesized peptide derived from human Abl1 around the non-phosphorylation site of Y204.
Isotype:	IgG
Specificity:	Abl1 Polyclonal Antibody detects endogenous levels of Abl1 protein.
Characteristics:	Rabbit Polyclonal to Abl1.
Purification:	The antibody was affinity-purified from rabbit antiserum by affinity-chromatography using epitope-specific immunogen.

## Target Details

Target:	ABL1
Alternative Name:	Abl1 ( <a href="#">ABL1 Products</a> )

## Target Details

---

Molecular Weight:	72 kDa
Gene ID:	25
UniProt:	<a href="#">P00519</a>
Pathways:	<a href="#">Apoptosis, Regulation of Muscle Cell Differentiation, Platelet-derived growth Factor Receptor Signaling, Lipid Metabolism</a>

## Application Details

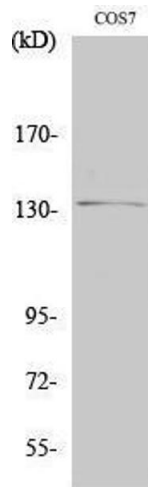
---

Application Notes:	WB 1:500-1:2000, IHC 1:100-1:300, ELISA 1:5000,
Restrictions:	For Research Use only

## Handling

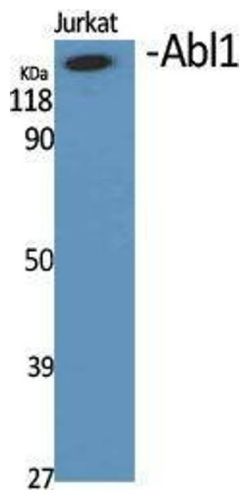
---

Format:	Liquid
Concentration:	1 mg/mL
Buffer:	Liquid in PBS containing 50 % glycerol, 0.5 % BSA and 0.02 % sodium azide.
Preservative:	Sodium azide
Precaution of Use:	This product contains Sodium azide: a POISONOUS AND HAZARDOUS SUBSTANCE which should be handled by trained staff only.
Handling Advice:	Avoid repeated freeze/thaw cycles.
Storage:	-20 °C
Storage Comment:	Store at -20°C.



### Western Blotting

Image 1.



### Western Blotting

Image 2. Western Blot (WB) analysis of specific cells using Abl1 Polyclonal Antibody.