

Datasheet for ABIN3183605  
**anti-ABL1 antibody (Ser120, Ser121)**[Go to Product page](#)

## 2 Images

## Overview

|                      |                                     |
|----------------------|-------------------------------------|
| Quantity:            | 100 µL                              |
| Target:              | ABL1                                |
| Binding Specificity: | Ser120, Ser121                      |
| Reactivity:          | Human, Mouse, Rat, Monkey           |
| Host:                | Rabbit                              |
| Clonality:           | Polyclonal                          |
| Conjugate:           | This ABL1 antibody is un-conjugated |
| Application:         | Western Blotting (WB), ELISA        |

## Product Details

|                  |   |
|------------------|---|
| Immunogen:       | Synthesized peptide derived from human Abl1 around the non-phosphorylation site of T735.                              |
| Isotype:         | IgG   |
| Specificity:     | Abl1 Polyclonal Antibody detects endogenous levels of Abl1 protein.   |
| Characteristics: | Rabbit Polyclonal to Abl1.  |
| Purification:    | The antibody was affinity-purified from rabbit antiserum by affinity-chromatography using epitope-specific immunogen. |

## Target Details

|                   |  |
|-------------------|--|
| Target:           | ABL1                                   |
| Alternative Name: | Abl1 ( <a href="#">ABL1 Products</a> ) |

## Target Details

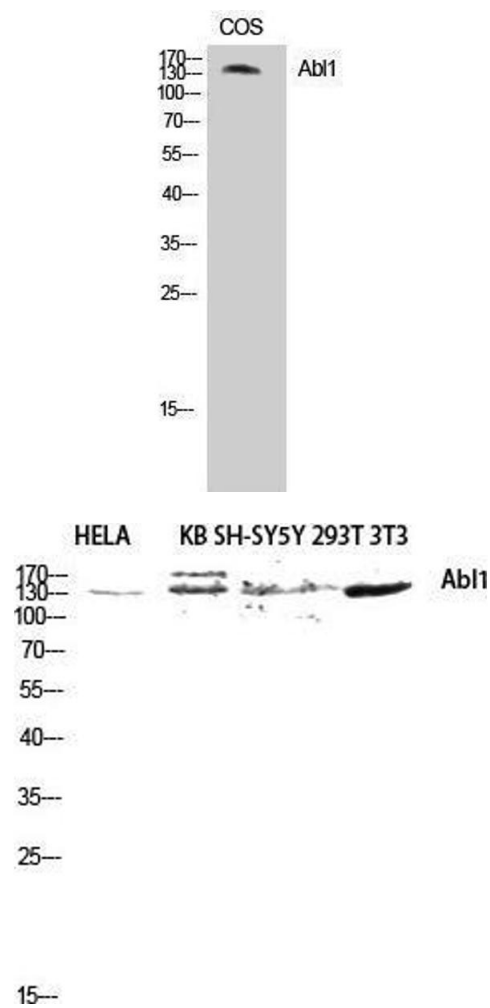
|                   |  |
|-------------------|--|
| Molecular Weight: | 25 kDa   |
| Gene ID:          | 25   |
| UniProt:          | <a href="#">P00519</a>   |
| Pathways:         | <a href="#">Apoptosis</a> , <a href="#">Regulation of Muscle Cell Differentiation</a> , <a href="#">Platelet-derived growth Factor Receptor Signaling</a> , <a href="#">Lipid Metabolism</a> |

## Application Details

|                    |                                 |
|--------------------|---------------------------------|
| Application Notes: | WB 1:500-1:2000, ELISA 1:20000, |
| Restrictions:      | For Research Use only           |

## Handling

|                    |  |
|--------------------|--|
| Format:            | Liquid   |
| Concentration:     | 1 mg/mL  |
| Buffer:            | Liquid in PBS containing 50 % glycerol, 0.5 % BSA and 0.02 % sodium azide.   |
| Preservative:      | Sodium azide   |
| Precaution of Use: | This product contains Sodium azide: a POISONOUS AND HAZARDOUS SUBSTANCE which should be handled by trained staff only. |
| Handling Advice:   | Avoid repeated freeze/thaw cycles.   |
| Storage:           | -20 °C   |
| Storage Comment:   | Store at -20°C.  |



Western Blotting

Image 1.

Western Blotting

Image 2. Western Blot (WB) analysis of HeLa KB SH-SY5Y 293T 3T3 lysis using Abl1 antibody.