



[Go to Product page](#)

Datasheet for ABIN3183638

anti-CaMKIIalpha/delta antibody (Lys542)

1 Image

Overview

Quantity:	100 µL
Target:	CaMKIIalpha/delta
Binding Specificity:	Lys542
Reactivity:	Human, Mouse, Rat
Host:	Rabbit
Clonality:	Polyclonal
Conjugate:	This CaMKIIalpha/delta antibody is un-conjugated
Application:	Immunofluorescence (IF), Western Blotting (WB), Immunohistochemistry (IHC), ELISA

Product Details

Immunogen:	Synthesized peptide derived from human CaMKIIalpha/delta around the non-phosphorylation site of T286.
Isotype:	IgG
Specificity:	CaMKIIα/δ Polyclonal Antibody detects endogenous levels of CaMKIIα/δ protein.
Characteristics:	Rabbit Polyclonal to CaMKIIα/δ.
Purification:	The antibody was affinity-purified from rabbit antiserum by affinity-chromatography using epitope-specific immunogen.

Target Details

Target:	CaMKIIalpha/delta
---------	-------------------

Target Details

Abstract:	CaMKIIalpha/delta Products
Molecular Weight:	70 kDa
Gene ID:	815, 817
UniProt:	Q9UQM7, Q13557

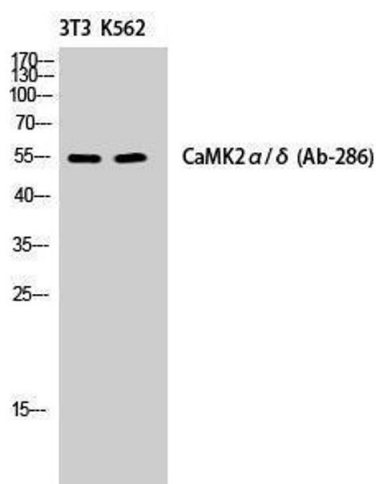
Application Details

Application Notes:	WB 1:500-1:2000, IHC 1:100-1:300, IF 1:200-1:1000, ELISA 1:10000,
Restrictions:	For Research Use only

Handling

Format:	Liquid
Concentration:	1 mg/mL
Buffer:	Liquid in PBS containing 50 % glycerol, 0.5 % BSA and 0.02 % sodium azide.
Preservative:	Sodium azide
Precaution of Use:	This product contains Sodium azide: a POISONOUS AND HAZARDOUS SUBSTANCE which should be handled by trained staff only.
Handling Advice:	Avoid repeated freeze/thaw cycles.
Storage:	-20 °C
Storage Comment:	Store at -20°C.

Validation report #102721 for Unfolding Profile (UP)



Western Blotting

Image 1.