

Datasheet for ABIN3183685  
**anti-beta Catenin antibody (Ser29)**



[Go to Product page](#)

2 Images

## Overview

Quantity:	100 µL
Target:	beta Catenin (CATNB)
Binding Specificity:	Ser29
Reactivity:	Human, Mouse, Rat, Monkey
Host:	Rabbit
Clonality:	Polyclonal
Conjugate:	This beta Catenin antibody is un-conjugated
Application:	Western Blotting (WB), Immunohistochemistry (IHC), Immunofluorescence (IF), ELISA

## Product Details

Immunogen:	Synthesized peptide derived from human Catenin-beta around the non-phosphorylation site of S33.
Isotype:	IgG
Specificity:	Catenin-β Polyclonal Antibody detects endogenous levels of Catenin-β protein.
Characteristics:	Rabbit Polyclonal to Catenin-β.
Purification:	The antibody was affinity-purified from rabbit antiserum by affinity-chromatography using epitope-specific immunogen.

## Target Details

Target:	beta Catenin (CATNB)
---------	----------------------

## Target Details

---

Alternative Name: Catenin-beta ([CATNB Products](#))

Molecular Weight: 9.393 kDa

Gene ID: 1499

UniProt: [P35222](#)

Pathways: [Peptide Hormone Metabolism](#)

## Application Details

---

Application Notes: WB 1:500-1:2000, IHC 1:100-1:300, IF 1:200-1:1000, ELISA 1:20000,

Restrictions: For Research Use only

## Handling

---

Format: Liquid

Concentration: 1 mg/mL

Buffer: Liquid in PBS containing 50 % glycerol, 0.5 % BSA and 0.02 % sodium azide.

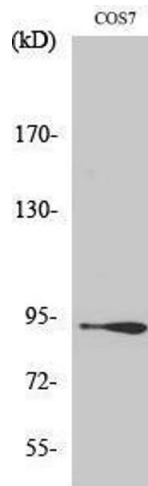
Preservative: Sodium azide

Precaution of Use: This product contains Sodium azide: a POISONOUS AND HAZARDOUS SUBSTANCE which should be handled by trained staff only.

Handling Advice: Avoid repeated freeze/thaw cycles.

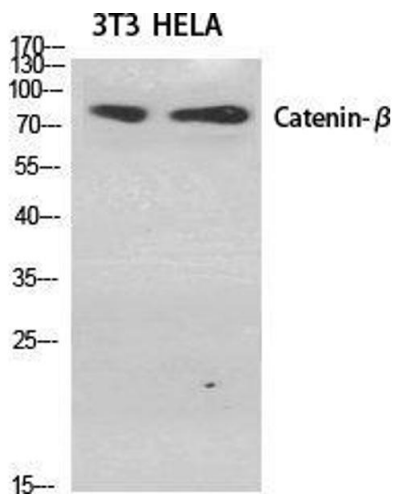
Storage: -20 °C

Storage Comment: Store at -20°C.



**Western Blotting**

**Image 1.**



**Western Blotting**

**Image 2.** Western Blot (WB) analysis of specific cells using Catenin-beta Polyclonal Antibody.