



[Go to Product page](#)

Datasheet for ABIN3183816
anti-CDC42EP2 antibody (N-Term)

1 Image

Overview

Quantity:	100 µL
Target:	CDC42EP2
Binding Specificity:	N-Term
Reactivity:	Human, Mouse, Rat
Host:	Rabbit
Clonality:	Polyclonal
Conjugate:	This CDC42EP2 antibody is un-conjugated
Application:	ELISA, Western Blotting (WB), Immunohistochemistry (IHC)

Product Details

Immunogen:	Synthesized peptide derived from the N-terminal region of human Cdc42EP2.
Isotype:	IgG
Specificity:	Cdc42EP2 Polyclonal Antibody detects endogenous levels of Cdc42EP2 protein.
Characteristics:	Rabbit Polyclonal to Cdc42EP2.
Purification:	The antibody was affinity-purified from rabbit antiserum by affinity-chromatography using epitope-specific immunogen.

Target Details

Target:	CDC42EP2
Alternative Name:	Cdc42EP2 (CDC42EP2 Products)

Target Details

Molecular Weight: 28 kDa

Gene ID: 10435

UniProt: [O14613](#)

Pathways: [Regulation of Actin Filament Polymerization](#)

Application Details

Application Notes: WB 1:500-1:2000, IHC 1:100-1:300, ELISA 1:40000,

Restrictions: For Research Use only

Handling

Format: Liquid

Concentration: 1 mg/mL

Buffer: Liquid in PBS containing 50 % glycerol, 0.5 % BSA and 0.02 % sodium azide.

Preservative: Sodium azide

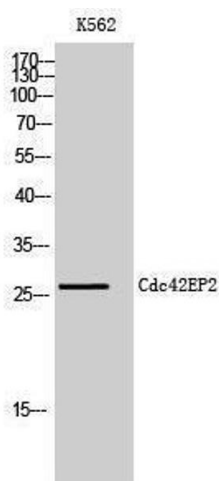
Precaution of Use: This product contains Sodium azide: a POISONOUS AND HAZARDOUS SUBSTANCE which should be handled by trained staff only.

Handling Advice: Avoid repeated freeze/thaw cycles.

Storage: -20 °C

Storage Comment: Store at -20°C.

Images



Western Blotting

Image 1.