



[Go to Product page](#)

Datasheet for ABIN3183817  
**anti-CDC42EP3 antibody (N-Term)**

1 Image

Overview

|                      |   |
|----------------------|---|
| Quantity:            | 100 µL                                  |
| Target:              | CDC42EP3                                |
| Binding Specificity: | N-Term                                  |
| Reactivity:          | Human, Mouse, Rat                       |
| Host:                | Rabbit                                  |
| Clonality:           | Polyclonal                              |
| Conjugate:           | This CDC42EP3 antibody is un-conjugated |
| Application:         | Western Blotting (WB), ELISA            |

Product Details

|                  |   |
|------------------|---|
| Immunogen:       | Synthesized peptide derived from the N-terminal region of human Cdc42EP3.   |
| Isotype:         | IgG   |
| Specificity:     | Cdc42EP3 Polyclonal Antibody detects endogenous levels of Cdc42EP3 protein.   |
| Characteristics: | Rabbit Polyclonal to Cdc42EP3.  |
| Purification:    | The antibody was affinity-purified from rabbit antiserum by affinity-chromatography using epitope-specific immunogen. |

Target Details

|                   |  |
|-------------------|--|
| Target:           | CDC42EP3                                       |
| Alternative Name: | Cdc42EP3 ( <a href="#">CDC42EP3 Products</a> ) |

## Target Details

|                   |                        |
|-------------------|------------------------|
| Molecular Weight: | 26 kDa                 |
| Gene ID:          | 10602                  |
| UniProt:          | <a href="#">Q9UKI2</a> |

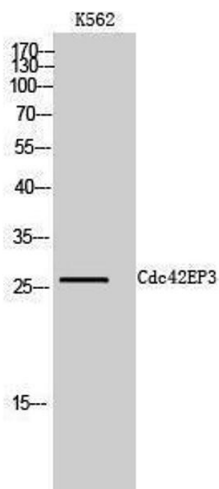
## Application Details

|                    |                                 |
|--------------------|---------------------------------|
| Application Notes: | WB 1:500-1:2000, ELISA 1:40000, |
| Restrictions:      | For Research Use only           |

## Handling

|                    |  |
|--------------------|--|
| Format:            | Liquid   |
| Concentration:     | 1 mg/mL  |
| Buffer:            | Liquid in PBS containing 50 % glycerol, 0.5 % BSA and 0.02 % sodium azide.   |
| Preservative:      | Sodium azide   |
| Precaution of Use: | This product contains Sodium azide: a POISONOUS AND HAZARDOUS SUBSTANCE which should be handled by trained staff only. |
| Handling Advice:   | Avoid repeated freeze/thaw cycles.   |
| Storage:           | -20 °C   |
| Storage Comment:   | Store at -20°C.  |

## Images



### Western Blotting

Image 1.