



Datasheet for ABIN3183857
anti-CEP135 antibody (C-Term)



[Go to Product page](#)

2 Images

Overview

Quantity:	100 µL
Target:	CEP135
Binding Specificity:	C-Term
Reactivity:	Human, Mouse
Host:	Rabbit
Clonality:	Polyclonal
Conjugate:	This CEP135 antibody is un-conjugated
Application:	ELISA, Western Blotting (WB), Immunohistochemistry (IHC)

Product Details

Immunogen:	Synthesized peptide derived from the C-terminal region of human CEP135.
Isotype:	IgG
Specificity:	CEP135 Polyclonal Antibody detects endogenous levels of CEP135 protein.
Characteristics:	Rabbit Polyclonal to CEP135.
Purification:	The antibody was affinity-purified from rabbit antiserum by affinity-chromatography using epitope-specific immunogen.

Target Details

Target:	CEP135
Alternative Name:	CEP135 (CEP135 Products)

Target Details

Molecular Weight:	134 kDa
Gene ID:	9662
UniProt:	Q66GS9
Pathways:	M Phase , SARS-CoV-2 Protein Interactome

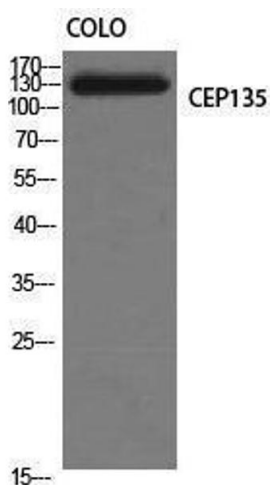
Application Details

Application Notes:	WB 1:500-1:2000, IHC 1:100-1:300, ELISA 1:40000,
Restrictions:	For Research Use only

Handling

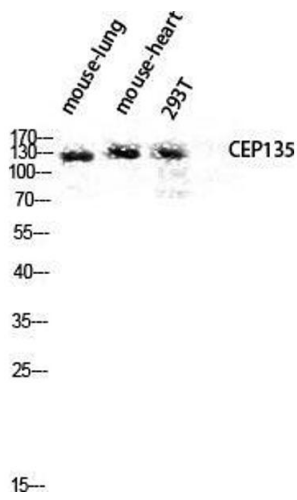
Format:	Liquid
Concentration:	1 mg/mL
Buffer:	Liquid in PBS containing 50 % glycerol, 0.5 % BSA and 0.02 % sodium azide.
Preservative:	Sodium azide
Precaution of Use:	This product contains Sodium azide: a POISONOUS AND HAZARDOUS SUBSTANCE which should be handled by trained staff only.
Handling Advice:	Avoid repeated freeze/thaw cycles.
Storage:	-20 °C
Storage Comment:	Store at -20°C.

Images



Western Blotting

Image 1.



Western Blotting

Image 2. Western Blot (WB) analysis of Mouse Lung Mouse Heart 293T lysis using CEP135 antibody.