



[Go to Product page](#)

Datasheet for ABIN3183887  
**anti-c-FOS antibody (Ser392)**

2 Images

Overview

Quantity:	100 µL
Target:	c-FOS (c-Fos)
Binding Specificity:	Ser392
Reactivity:	Human, Mouse, Rat
Host:	Rabbit
Clonality:	Polyclonal
Conjugate:	This c-FOS antibody is un-conjugated
Application:	Western Blotting (WB), ELISA, Immunohistochemistry (IHC)

Product Details

Immunogen:	Synthesized peptide derived from human c-Fos around the non-phosphorylation site of S374.
Isotype:	IgG
Specificity:	C-Fos Polyclonal Antibody detects endogenous levels of c-Fos protein.
Characteristics:	Rabbit Polyclonal to c-Fos.
Purification:	The antibody was affinity-purified from rabbit antiserum by affinity-chromatography using epitope-specific immunogen.

Target Details

Target:	c-FOS (c-Fos)
Alternative Name:	C-Fos ( <a href="#">c-Fos Products</a> )

## Target Details

Molecular Weight: 75/65 kDa

Gene ID: 2353

UniProt: [P01100](#)

Pathways: [S100 Proteins](#)

## Application Details

Application Notes: WB 1:500-1:2000, IHC 1:100-1:300, ELISA 1:5000,

Restrictions: For Research Use only

## Handling

Format: Liquid

Concentration: 1 mg/mL

Buffer: Liquid in PBS containing 50 % glycerol, 0.5 % BSA and 0.02 % sodium azide.

Preservative: Sodium azide

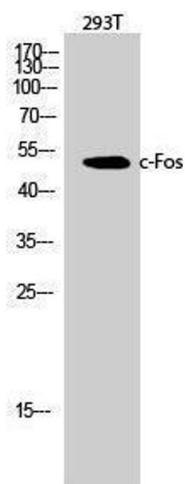
Precaution of Use: This product contains Sodium azide: a POISONOUS AND HAZARDOUS SUBSTANCE which should be handled by trained staff only.

Handling Advice: Avoid repeated freeze/thaw cycles.

Storage: -20 °C

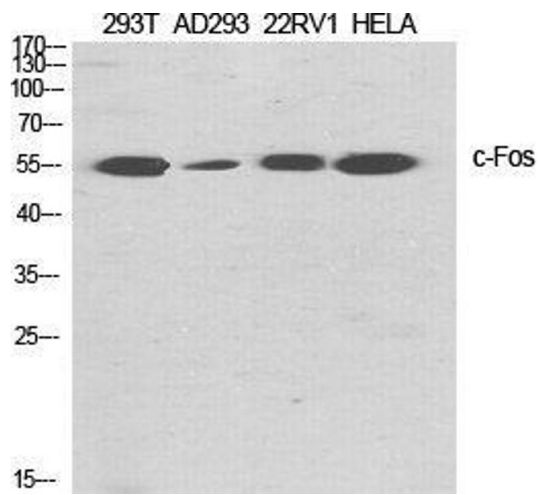
Storage Comment: Store at -20°C.

## Images



### Western Blotting

Image 1.



### Western Blotting

**Image 2.** Western Blot (WB) analysis of specific cells using c-Fos Polyclonal Antibody.