



[Go to Product page](#)

Datasheet for ABIN3183898
anti-CHEK1 antibody (Ser246)

2 Images

Overview

Quantity:	100 µL
Target:	CHEK1
Binding Specificity:	Ser246
Reactivity:	Human
Host:	Rabbit
Clonality:	Polyclonal
Conjugate:	This CHEK1 antibody is un-conjugated
Application:	Western Blotting (WB), ELISA, Immunohistochemistry (IHC), Immunofluorescence (IF)

Product Details

Immunogen:	Synthesized peptide derived from human Chk1 around the non-phosphorylation site of S286.
Isotype:	IgG
Specificity:	Chk1 Polyclonal Antibody detects endogenous levels of Chk1 protein.
Characteristics:	Rabbit Polyclonal to Chk1.
Purification:	The antibody was affinity-purified from rabbit antiserum by affinity-chromatography using epitope-specific immunogen.

Target Details

Target:	CHEK1
Alternative Name:	Chk1 (CHEK1 Products)

Target Details

Molecular Weight:	42 kDa
Gene ID:	1111
UniProt:	O14757
Pathways:	p53 Signaling , Apoptosis , Cell Division Cycle , DNA Damage Repair

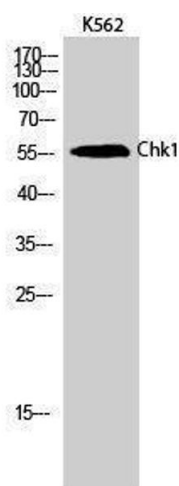
Application Details

Application Notes:	WB 1:500-1:2000, IHC 1:100-1:300, IF 1:200-1:1000, ELISA 1:5000,
Restrictions:	For Research Use only

Handling

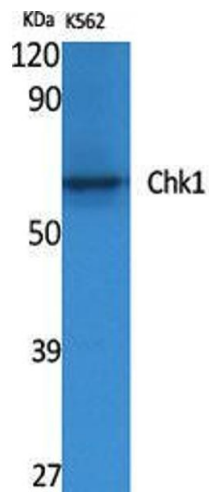
Format:	Liquid
Concentration:	1 mg/mL
Buffer:	Liquid in PBS containing 50 % glycerol, 0.5 % BSA and 0.02 % sodium azide.
Preservative:	Sodium azide
Precaution of Use:	This product contains Sodium azide: a POISONOUS AND HAZARDOUS SUBSTANCE which should be handled by trained staff only.
Handling Advice:	Avoid repeated freeze/thaw cycles.
Storage:	-20 °C
Storage Comment:	Store at -20°C.

Images



Western Blotting

Image 1.



Western Blotting

Image 2. Western Blot (WB) analysis of specific cells using Chk1 Polyclonal Antibody.