



[Go to Product page](#)

Datasheet for ABIN3183960

## anti-CLK1 antibody (Internal Region)

### 2 Images

#### Overview

Quantity:	100 µL
Target:	CLK1
Binding Specificity:	Internal Region
Reactivity:	Human, Mouse
Host:	Rabbit
Clonality:	Polyclonal
Conjugate:	This CLK1 antibody is un-conjugated
Application:	Western Blotting (WB), ELISA, Immunofluorescence (IF), Immunohistochemistry (IHC)

#### Product Details

Immunogen:	Synthesized peptide derived from the Internal region of human CLK1.
Isotype:	IgG
Specificity:	CLK1 Polyclonal Antibody detects endogenous levels of CLK1 protein.
Characteristics:	Rabbit Polyclonal to CLK1.
Purification:	The antibody was affinity-purified from rabbit antiserum by affinity-chromatography using epitope-specific immunogen.

#### Target Details

Target:	CLK1
Alternative Name:	CLK1 ( <a href="#">CLK1 Products</a> )

## Target Details

Molecular Weight: 57 kDa

Gene ID: 1195

UniProt: [P49759](#)

## Application Details

Application Notes: WB 1:500-1:2000, IHC 1:100-1:300, IF 1:200-1:1000, ELISA 1:20000,

Restrictions: For Research Use only

## Handling

Format: Liquid

Concentration: 1 mg/mL

Buffer: Liquid in PBS containing 50 % glycerol, 0.5 % BSA and 0.02 % sodium azide.

Preservative: Sodium azide

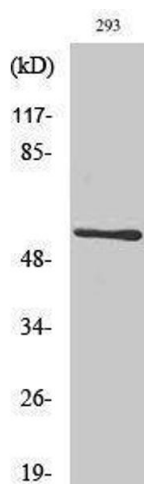
Precaution of Use: This product contains Sodium azide: a POISONOUS AND HAZARDOUS SUBSTANCE which should be handled by trained staff only.

Handling Advice: Avoid repeated freeze/thaw cycles.

Storage: -20 °C

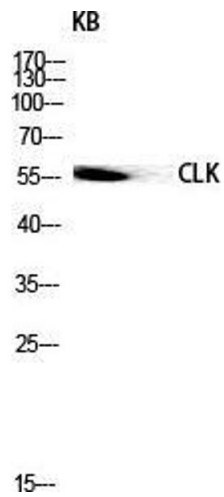
Storage Comment: Store at -20°C.

## Images



### Western Blotting

Image 1.



### Western Blotting

**Image 2.** Western Blot (WB) analysis of KB lysis using CLK1 antibody.