

Datasheet for ABIN3183996  
**anti-COL11A1 antibody (Internal Region)**[Go to Product page](#)

## 1 Image

## Overview

Quantity:	100 µL
Target:	COL11A1
Binding Specificity:	Internal Region
Reactivity:	Human, Mouse
Host:	Rabbit
Clonality:	Polyclonal
Conjugate:	This COL11A1 antibody is un-conjugated
Application:	ELISA, Western Blotting (WB), Immunohistochemistry (IHC), Immunofluorescence (IF)

## Product Details

Immunogen:	Synthesized peptide derived from the Internal region of human COL11A1.
Isotype:	IgG
Specificity:	COL11A1 Polyclonal Antibody detects endogenous levels of COL11A1 protein.
Characteristics:	Rabbit Polyclonal to COL11A1.
Purification:	The antibody was affinity-purified from rabbit antiserum by affinity-chromatography using epitope-specific immunogen.

## Target Details

Target:	COL11A1
Alternative Name:	COL11A1 ( <a href="#">COL11A1 Products</a> )

## Target Details

Molecular Weight:	181 kDa
Gene ID:	1301
UniProt:	<a href="#">P12107</a>
Pathways:	<a href="#">Sensory Perception of Sound</a>

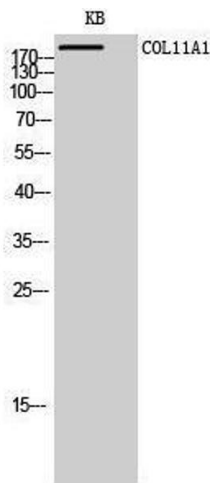
## Application Details

Application Notes:	WB 1:500-1:2000, IHC 1:100-1:300, IF 1:200-1:1000, ELISA 1:10000,
Restrictions:	For Research Use only

## Handling

Format:	Liquid
Concentration:	1 mg/mL
Buffer:	Liquid in PBS containing 50 % glycerol, 0.5 % BSA and 0.02 % sodium azide.
Preservative:	Sodium azide
Precaution of Use:	This product contains Sodium azide: a POISONOUS AND HAZARDOUS SUBSTANCE which should be handled by trained staff only.
Handling Advice:	Avoid repeated freeze/thaw cycles.
Storage:	-20 °C
Storage Comment:	Store at -20°C.

## Images



### Western Blotting

Image 1.