

Datasheet for ABIN3184034
anti-Connexin 43/GJA1 antibody (C-Term)



[Go to Product page](#)

2 Images

Overview

Quantity:	100 µL
Target:	Connexin 43/GJA1 (GJA1)
Binding Specificity:	C-Term
Reactivity:	Human, Rat, Mouse
Host:	Rabbit
Clonality:	Polyclonal
Conjugate:	This Connexin 43/GJA1 antibody is un-conjugated
Application:	Western Blotting (WB), Immunohistochemistry (IHC), ELISA, Immunofluorescence (IF)

Product Details

Immunogen:	Synthesized peptide derived from the C-terminal region of human Connexin 43.
Isotype:	IgG
Specificity:	Connexin 43 Polyclonal Antibody detects endogenous levels of Connexin 43 protein.
Characteristics:	Rabbit Polyclonal to Connexin 43.
Purification:	The antibody was affinity-purified from rabbit antiserum by affinity-chromatography using epitope-specific immunogen.

Target Details

Target:	Connexin 43/GJA1 (GJA1)
Alternative Name:	Connexin 43 (GJA1 Products)

Target Details

Molecular Weight: 43 kDa

Gene ID: 2697

UniProt: [P17302](#)

Pathways: [MAPK Signaling](#), [Myometrial Relaxation and Contraction](#), [Cell-Cell Junction Organization](#)

Application Details

Application Notes: WB 1:500-1:2000, IHC 1:100-1:300, IF 1:200-1:1000, ELISA 1:10000,

Restrictions: For Research Use only

Handling

Format: Liquid

Concentration: 1 mg/mL

Buffer: Liquid in PBS containing 50 % glycerol, 0.5 % BSA and 0.02 % sodium azide.

Preservative: Sodium azide

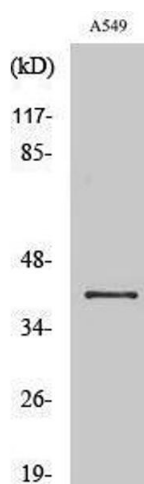
Precaution of Use: This product contains Sodium azide: a POISONOUS AND HAZARDOUS SUBSTANCE which should be handled by trained staff only.

Handling Advice: Avoid repeated freeze/thaw cycles.

Storage: -20 °C

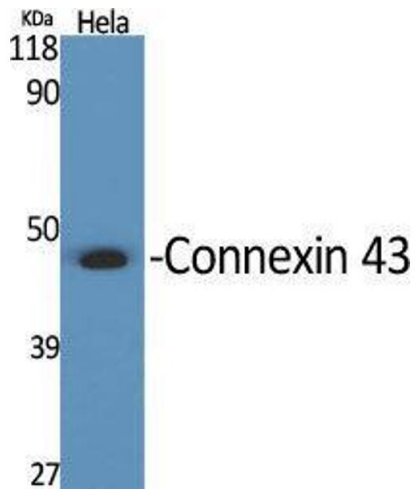
Storage Comment: Store at -20°C.

Images



Western Blotting

Image 1.



Western Blotting

Image 2. Western Blot (WB) analysis of specific cells using Connexin 43 Polyclonal Antibody.