



Datasheet for ABIN3184089  
**anti-DPYSL2 antibody (Ser308)**



[Go to Product page](#)

1 Image

Overview

Quantity:	100 µL
Target:	DPYSL2
Binding Specificity:	Ser308
Reactivity:	Human, Mouse, Rat
Host:	Rabbit
Clonality:	Polyclonal
Conjugate:	This DPYSL2 antibody is un-conjugated
Application:	Western Blotting (WB), ELISA, Immunohistochemistry (IHC)

Product Details

Immunogen:	Synthesized peptide derived from human CRMP-2 around the non-phosphorylation site of T509.
Isotype:	IgG
Specificity:	CRMP-2 Polyclonal Antibody detects endogenous levels of CRMP-2 protein.
Characteristics:	Rabbit Polyclonal to CRMP-2.
Purification:	The antibody was affinity-purified from rabbit antiserum by affinity-chromatography using epitope-specific immunogen.

Target Details

Target:	DPYSL2
Alternative Name:	CRMP-2 ( <a href="#">DPYSL2 Products</a> )

## Target Details

Molecular Weight:	47.916 kDa
Gene ID:	1808
UniProt:	<a href="#">Q16555</a>
Pathways:	<a href="#">Regulation of Cell Size</a>

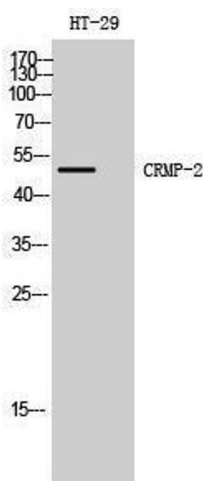
## Application Details

Application Notes:	WB 1:500-1:2000, IHC 1:100-1:300, ELISA 1:20000,
Restrictions:	For Research Use only

## Handling

Format:	Liquid
Concentration:	1 mg/mL
Buffer:	Liquid in PBS containing 50 % glycerol, 0.5 % BSA and 0.02 % sodium azide.
Preservative:	Sodium azide
Precaution of Use:	This product contains Sodium azide: a POISONOUS AND HAZARDOUS SUBSTANCE which should be handled by trained staff only.
Handling Advice:	Avoid repeated freeze/thaw cycles.
Storage:	-20 °C
Storage Comment:	Store at -20°C.

## Images



### Western Blotting

Image 1.