



[Go to Product page](#)

Datasheet for ABIN3184122
anti-CTDSP1 antibody (N-Term)

2 Images

Overview

Quantity:	100 µL
Target:	CTDSP1
Binding Specificity:	N-Term
Reactivity:	Human, Mouse, Rat
Host:	Rabbit
Clonality:	Polyclonal
Conjugate:	This CTDSP1 antibody is un-conjugated
Application:	Western Blotting (WB), ELISA, Immunohistochemistry (IHC)

Product Details

Immunogen:	Synthesized peptide derived from the N-terminal region of human CTDSP1.
Isotype:	IgG
Specificity:	CTDSP1 Polyclonal Antibody detects endogenous levels of CTDSP1 protein.
Characteristics:	Rabbit Polyclonal to CTDSP1.
Purification:	The antibody was affinity-purified from rabbit antiserum by affinity-chromatography using epitope-specific immunogen.

Target Details

Target:	CTDSP1
Alternative Name:	CTDSP1 (CTDSP1 Products)

Target Details

Molecular Weight: 30 kDa

Gene ID: 58190

UniProt: [Q9GZU7](#)

Application Details

Application Notes: WB 1:500-1:2000, IHC 1:100-1:300, ELISA 1:40000,

Restrictions: For Research Use only

Handling

Format: Liquid

Concentration: 1 mg/mL

Buffer: Liquid in PBS containing 50 % glycerol, 0.5 % BSA and 0.02 % sodium azide.

Preservative: Sodium azide

Precaution of Use: This product contains Sodium azide: a POISONOUS AND HAZARDOUS SUBSTANCE which should be handled by trained staff only.

Handling Advice: Avoid repeated freeze/thaw cycles.

Storage: -20 °C

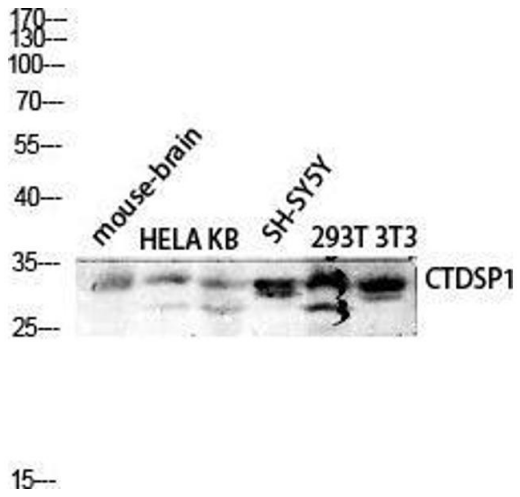
Storage Comment: Store at -20°C.

Images



Western Blotting

Image 1.



Western Blotting

Image 2. Western Blot (WB) analysis of Mouse Brain HeLa KB SH-SY5Y 293T 3T3 lysis using CTDSP1 antibody.