



[Go to Product page](#)

Datasheet for ABIN3184129  
**anti-Cullin 1 antibody (C-Term)**

2 Images

Overview

Quantity:	100 µL
Target:	Cullin 1 (CUL1)
Binding Specificity:	C-Term
Reactivity:	Human, Mouse
Host:	Rabbit
Clonality:	Polyclonal
Conjugate:	This Cullin 1 antibody is un-conjugated
Application:	Western Blotting (WB), ELISA, Immunohistochemistry (IHC), Immunofluorescence (IF)

Product Details

Immunogen:	Synthesized peptide derived from the C-terminal region of human CUL-1.
Isotype:	IgG
Specificity:	CUL-1 Polyclonal Antibody detects endogenous levels of CUL-1 protein.
Characteristics:	Rabbit Polyclonal to CUL-1.
Purification:	The antibody was affinity-purified from rabbit antiserum by affinity-chromatography using epitope-specific immunogen.

Target Details

Target:	Cullin 1 (CUL1)
Alternative Name:	CUL-1 ( <a href="#">CUL1 Products</a> )

## Target Details

Molecular Weight: 89 kDa

Gene ID: 8454

UniProt: [Q13616](#)

Pathways: [Cell Division Cycle](#), [Hedgehog Signaling](#), [Mitotic G1-G1/S Phases](#), [Regulation of Cell Size](#)

## Application Details

Application Notes: WB 1:500-1:2000, IHC 1:100-1:300, IF 1:200-1:1000, ELISA 1:20000,

Restrictions: For Research Use only

## Handling

Format: Liquid

Concentration: 1 mg/mL

Buffer: Liquid in PBS containing 50 % glycerol, 0.5 % BSA and 0.02 % sodium azide.

Preservative: Sodium azide

Precaution of Use: This product contains Sodium azide: a POISONOUS AND HAZARDOUS SUBSTANCE which should be handled by trained staff only.

Handling Advice: Avoid repeated freeze/thaw cycles.

Storage: -20 °C

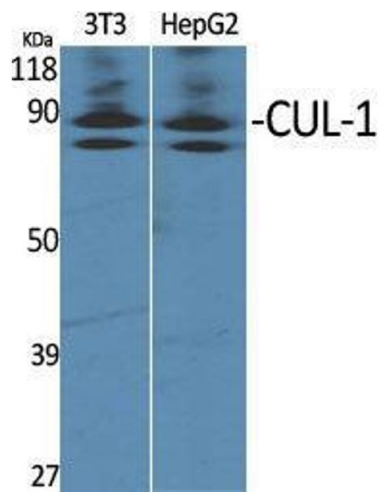
Storage Comment: Store at -20°C.

## Images



### Western Blotting

Image 1.



### Western Blotting

**Image 2.** Western Blot (WB) analysis of specific cells using CUL-1 Polyclonal Antibody.