

Datasheet for ABIN3184146  
**anti-Cyclin D3 antibody (Ser21)**



[Go to Product page](#)

1 Image

## Overview

Quantity:	100 µL
Target:	Cyclin D3 (CCND3)
Binding Specificity:	Ser21
Reactivity:	Human, Mouse, Rat, Monkey
Host:	Rabbit
Clonality:	Polyclonal
Conjugate:	This Cyclin D3 antibody is un-conjugated
Application:	Western Blotting (WB), ELISA, Immunohistochemistry (IHC)

## Product Details

Immunogen:	Synthesized peptide derived from human Cyclin D3 around the non-phosphorylation site of T283.
Isotype:	IgG
Specificity:	Cyclin D3 Polyclonal Antibody detects endogenous levels of Cyclin D3 protein.
Characteristics:	Rabbit Polyclonal to Cyclin D3.
Purification:	The antibody was affinity-purified from rabbit antiserum by affinity-chromatography using epitope-specific immunogen.

## Target Details

Target:	Cyclin D3 (CCND3)
---------	-------------------

## Target Details

---

Alternative Name:	Cyclin D3 ( <a href="#">CCND3 Products</a> )
Molecular Weight:	52 kDa
Gene ID:	896
UniProt:	<a href="#">P30281</a>
Pathways:	<a href="#">Cell Division Cycle</a> , <a href="#">Mitotic G1-G1/S Phases</a> , <a href="#">Glycosaminoglycan Metabolic Process</a>

## Application Details

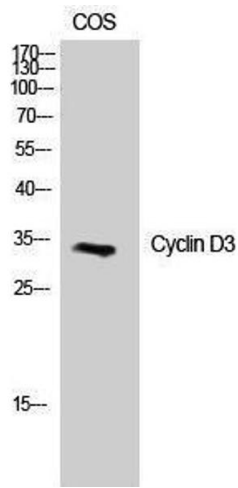
---

Application Notes:	WB 1:500-1:2000, IHC 1:100-1:300, ELISA 1:5000,
Restrictions:	For Research Use only

## Handling

---

Format:	Liquid
Concentration:	1 mg/mL
Buffer:	Liquid in PBS containing 50 % glycerol, 0.5 % BSA and 0.02 % sodium azide.
Preservative:	Sodium azide
Precaution of Use:	This product contains Sodium azide: a POISONOUS AND HAZARDOUS SUBSTANCE which should be handled by trained staff only.
Handling Advice:	Avoid repeated freeze/thaw cycles.
Storage:	-20 °C
Storage Comment:	Store at -20°C.



### Western Blotting

Image 1.