



[Go to Product page](#)

Datasheet for ABIN3184153

anti-Cyclin L1 antibody (C-Term)

1 Image

Overview

Quantity:	100 µL
Target:	Cyclin L1 (CCNL1)
Binding Specificity:	C-Term
Reactivity:	Human, Rat, Mouse
Host:	Rabbit
Clonality:	Polyclonal
Conjugate:	This Cyclin L1 antibody is un-conjugated
Application:	Western Blotting (WB), ELISA, Immunohistochemistry (IHC)

Product Details

Immunogen:	Synthesized peptide derived from the C-terminal region of human Cyclin L1.
Isotype:	IgG
Specificity:	Cyclin L1 Polyclonal Antibody detects endogenous levels of Cyclin L1 protein.
Characteristics:	Rabbit Polyclonal to Cyclin L1.
Purification:	The antibody was affinity-purified from rabbit antiserum by affinity-chromatography using epitope-specific immunogen.

Target Details

Target:	Cyclin L1 (CCNL1)
Alternative Name:	Cyclin L1 (CCNL1 Products)

Target Details

Molecular Weight: 60 kDa

Gene ID: 57018

UniProt: [Q9UK58](#)

Application Details

Application Notes: WB 1:500-1:2000, IHC 1:100-1:300, ELISA 1:10000,

Restrictions: For Research Use only

Handling

Format: Liquid

Concentration: 1 mg/mL

Buffer: Liquid in PBS containing 50 % glycerol, 0.5 % BSA and 0.02 % sodium azide.

Preservative: Sodium azide

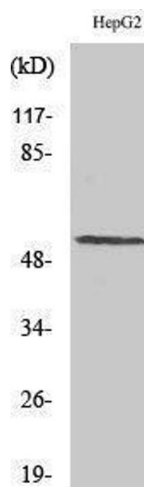
Precaution of Use: This product contains Sodium azide: a POISONOUS AND HAZARDOUS SUBSTANCE which should be handled by trained staff only.

Handling Advice: Avoid repeated freeze/thaw cycles.

Storage: -20 °C

Storage Comment: Store at -20°C.

Images



Western Blotting

Image 1.