



[Go to Product page](#)

Datasheet for ABIN3184180

anti-CYP2C8/9/18/19 antibody (Internal Region)

1 Image

Overview

Quantity:	100 µL
Target:	CYP2C8/9/18/19
Binding Specificity:	Internal Region
Reactivity:	Human
Host:	Rabbit
Clonality:	Polyclonal
Conjugate:	This CYP2C8/9/18/19 antibody is un-conjugated
Application:	Western Blotting (WB), Immunofluorescence (IF), ELISA, Immunohistochemistry (IHC)

Product Details

Immunogen:	Synthesized peptide derived from the Internal region of human CYP2C8/9/18/19.
Isotype:	IgG
Specificity:	CYP2C8/9/18/19 Polyclonal Antibody detects endogenous levels of CYP2C8/9/18/19 protein.
Characteristics:	Rabbit Polyclonal to CYP2C8/9/18/19.
Purification:	The antibody was affinity-purified from rabbit antiserum by affinity-chromatography using epitope-specific immunogen.

Target Details

Target:	CYP2C8/9/18/19
Alternative Name:	CYP2C8/9/18/19 (CYP2C8/9/18/19 Products)

Target Details

Molecular Weight:	60 kDa
Gene ID:	1562, 1558, 1559
UniProt:	P10632 , P11712 , P33260 , P33261

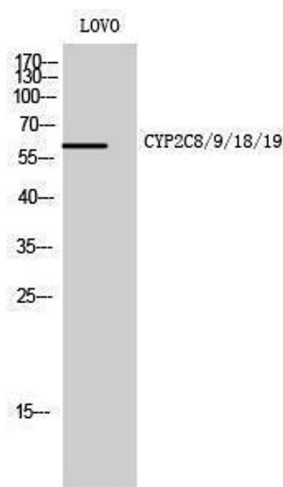
Application Details

Application Notes:	WB 1:500-1:2000, IHC 1:100-1:300, IF 1:200-1:1000, ELISA 1:20000,
Restrictions:	For Research Use only

Handling

Format:	Liquid
Concentration:	1 mg/mL
Buffer:	Liquid in PBS containing 50 % glycerol, 0.5 % BSA and 0.02 % sodium azide.
Preservative:	Sodium azide
Precaution of Use:	This product contains Sodium azide: a POISONOUS AND HAZARDOUS SUBSTANCE which should be handled by trained staff only.
Handling Advice:	Avoid repeated freeze/thaw cycles.
Storage:	-20 °C
Storage Comment:	Store at -20°C.

Images



Western Blotting

Image 1.