



[Go to Product page](#)

Datasheet for ABIN3184240

anti-D1DR antibody (Internal Region)

2 Images

Overview

Quantity:	100 µL
Target:	D1DR
Binding Specificity:	Internal Region
Reactivity:	Human, Mouse, Rat
Host:	Rabbit
Clonality:	Polyclonal
Conjugate:	This D1DR antibody is un-conjugated
Application:	ELISA, Immunofluorescence (IF), Western Blotting (WB), Immunohistochemistry (IHC)

Product Details

Immunogen:	Synthesized peptide derived from the Internal region of human D1DR.
Isotype:	IgG
Specificity:	D1DR Polyclonal Antibody detects endogenous levels of D1DR protein.
Characteristics:	Rabbit Polyclonal to D1DR.
Purification:	The antibody was affinity-purified from rabbit antiserum by affinity-chromatography using epitope-specific immunogen.

Target Details

Target:	D1DR
Alternative Name:	D1DR (D1DR Products)

Target Details

Molecular Weight: 50 kDa

Gene ID: 1812

UniProt: [P21728](#)

Application Details

Application Notes: WB 1:500-1:2000, IHC 1:100-1:300, IF 1:200-1:1000, ELISA 1:5000,

Restrictions: For Research Use only

Handling

Format: Liquid

Concentration: 1 mg/mL

Buffer: Liquid in PBS containing 50 % glycerol, 0.5 % BSA and 0.02 % sodium azide.

Preservative: Sodium azide

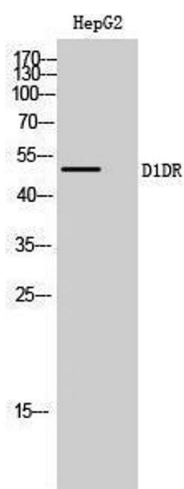
Precaution of Use: This product contains Sodium azide: a POISONOUS AND HAZARDOUS SUBSTANCE which should be handled by trained staff only.

Handling Advice: Avoid repeated freeze/thaw cycles.

Storage: -20 °C

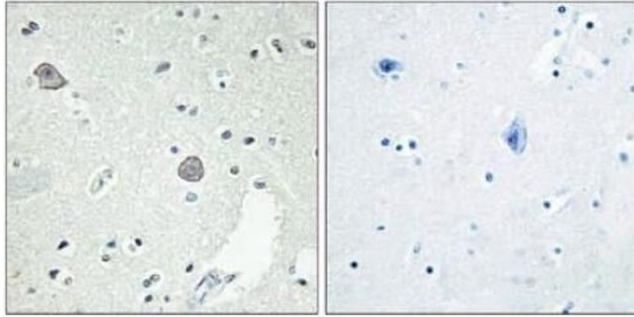
Storage Comment: Store at -20°C.

Images



Western Blotting

Image 1.



Peptide

-

+

Immunohistochemistry

Image 2. Immunohistochemical analysis of paraffin-embedded Human-Brian , antibody was diluted at 1:100.