



Datasheet for ABIN3184241
anti-DRD4 antibody (C-Term)



[Go to Product page](#)

2 Images

Overview

Quantity:	100 µL
Target:	DRD4
Binding Specificity:	C-Term
Reactivity:	Human, Mouse, Rat
Host:	Rabbit
Clonality:	Polyclonal
Conjugate:	This DRD4 antibody is un-conjugated
Application:	Western Blotting (WB), ELISA, Immunofluorescence (IF)

Product Details

Immunogen:	Synthesized peptide derived from the C-terminal region of human D4DR.
Isotype:	IgG
Specificity:	D4DR Polyclonal Antibody detects endogenous levels of D4DR protein.
Characteristics:	Rabbit Polyclonal to D4DR.
Purification:	The antibody was affinity-purified from rabbit antiserum by affinity-chromatography using epitope-specific immunogen.

Target Details

Target:	DRD4
Alternative Name:	D4DR (DRD4 Products)

Target Details

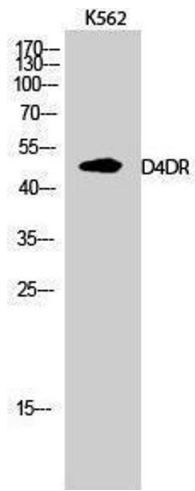
Molecular Weight:	48 kDa
Gene ID:	1815
UniProt:	P21917
Pathways:	cAMP Metabolic Process , Synaptic Membrane , Proton Transport , Photoperiodism , Negative Regulation of Transporter Activity

Application Details

Application Notes:	WB 1:500-1:2000, IF 1:200-1:1000, ELISA 1:40000,
Restrictions:	For Research Use only

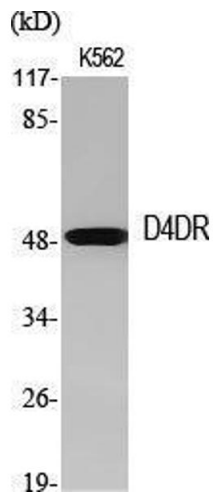
Handling

Format:	Liquid
Concentration:	1 mg/mL
Buffer:	Liquid in PBS containing 50 % glycerol, 0.5 % BSA and 0.02 % sodium azide.
Preservative:	Sodium azide
Precaution of Use:	This product contains Sodium azide: a POISONOUS AND HAZARDOUS SUBSTANCE which should be handled by trained staff only.
Handling Advice:	Avoid repeated freeze/thaw cycles.
Storage:	-20 °C
Storage Comment:	Store at -20°C.



Western Blotting

Image 1.



Western Blotting

Image 2. Western Blot (WB) analysis of specific cells using D4DR Polyclonal Antibody.