



[Go to Product page](#)

Datasheet for ABIN3184279
anti-DHX8 antibody (Internal Region)

1 Image

Overview

Quantity:	100 µL
Target:	DHX8
Binding Specificity:	Internal Region
Reactivity:	Human, Mouse
Host:	Rabbit
Clonality:	Polyclonal
Conjugate:	This DHX8 antibody is un-conjugated
Application:	Western Blotting (WB), ELISA

Product Details

Immunogen:	Synthesized peptide derived from the Internal region of human DDX8.
Isotype:	IgG
Specificity:	DDX8 Polyclonal Antibody detects endogenous levels of DDX8 protein.
Characteristics:	Rabbit Polyclonal to DDX8.
Purification:	The antibody was affinity-purified from rabbit antiserum by affinity-chromatography using epitope-specific immunogen.

Target Details

Target:	DHX8
Alternative Name:	DDX8 (DHX8 Products)

Target Details

Molecular Weight: 150 kDa

Gene ID: 1659

UniProt: [Q14562](#)

Application Details

Application Notes: WB 1:500-1:2000, ELISA 1:5000,

Restrictions: For Research Use only

Handling

Format: Liquid

Concentration: 1 mg/mL

Buffer: Liquid in PBS containing 50 % glycerol, 0.5 % BSA and 0.02 % sodium azide.

Preservative: Sodium azide

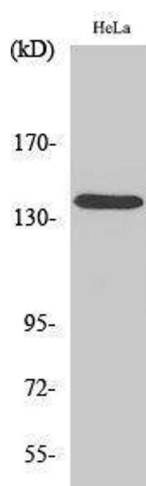
Precaution of Use: This product contains Sodium azide: a POISONOUS AND HAZARDOUS SUBSTANCE which should be handled by trained staff only.

Handling Advice: Avoid repeated freeze/thaw cycles.

Storage: -20 °C

Storage Comment: Store at -20°C.

Images



Western Blotting

Image 1.