



[Go to Product page](#)

Datasheet for ABIN3184287

## anti-Desmin antibody (C-Term)

### 3 Images

#### Overview

Quantity:	100 µL
Target:	Desmin (DES)
Binding Specificity:	C-Term
Reactivity:	Human, Mouse, Rat
Host:	Rabbit
Clonality:	Polyclonal
Conjugate:	This Desmin antibody is un-conjugated
Application:	Western Blotting (WB), Immunohistochemistry (IHC), ELISA, Immunofluorescence (IF)

#### Product Details

Immunogen:	Synthesized peptide derived from the C-terminal region of human Desmin.
Isotype:	IgG
Specificity:	Desmin Polyclonal Antibody detects endogenous levels of Desmin protein.
Characteristics:	Rabbit Polyclonal to Desmin.
Purification:	The antibody was affinity-purified from rabbit antiserum by affinity-chromatography using epitope-specific immunogen.

#### Target Details

Target:	Desmin (DES)
Alternative Name:	Desmin ( <a href="#">DES Products</a> )

## Target Details

Molecular Weight:	53 kDa
Gene ID:	1674
UniProt:	<a href="#">P17661</a>

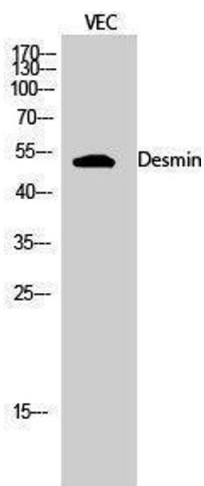
## Application Details

Application Notes:	WB 1:500-1:2000, IHC 1:100-1:300, IF 1:200-1:1000, ELISA 1:10000,
Restrictions:	For Research Use only

## Handling

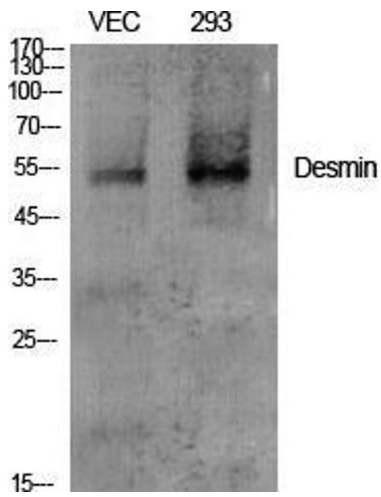
Format:	Liquid
Concentration:	1 mg/mL
Buffer:	Liquid in PBS containing 50 % glycerol, 0.5 % BSA and 0.02 % sodium azide.
Preservative:	Sodium azide
Precaution of Use:	This product contains Sodium azide: a POISONOUS AND HAZARDOUS SUBSTANCE which should be handled by trained staff only.
Handling Advice:	Avoid repeated freeze/thaw cycles.
Storage:	-20 °C
Storage Comment:	Store at -20°C.

## Images



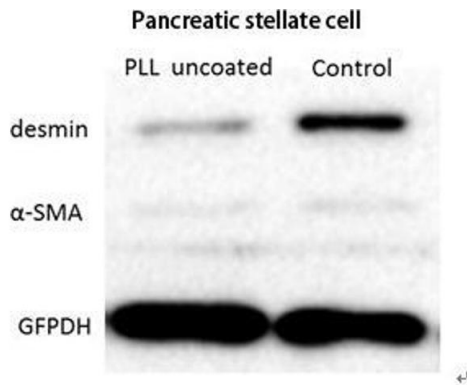
### Western Blotting

Image 1.



### Western Blotting

**Image 2.** Western Blot (WB) analysis of specific cells using Desmin Polyclonal Antibody.



### Western Blotting

**Image 3.** Western Blot (WB) analysis: Please contact us for more details. ([info@stjohnslabs.com](mailto:info@stjohnslabs.com))

Union Hospital of Wuhan