



[Go to Product page](#)

Datasheet for ABIN3184444
anti-EIF3L antibody (N-Term)

1 Image

Overview

Quantity:	100 µL
Target:	EIF3L
Binding Specificity:	N-Term
Reactivity:	Human, Mouse
Host:	Rabbit
Clonality:	Polyclonal
Conjugate:	This EIF3L antibody is un-conjugated
Application:	Western Blotting (WB), ELISA, Immunofluorescence (IF)

Product Details

Immunogen:	Synthesized peptide derived from the N-terminal region of human eIF3L.
Isotype:	IgG
Specificity:	EIF3L Polyclonal Antibody detects endogenous levels of eIF3L protein.
Characteristics:	Rabbit Polyclonal to eIF3L.
Purification:	The antibody was affinity-purified from rabbit antiserum by affinity-chromatography using epitope-specific immunogen.

Target Details

Target:	EIF3L
Alternative Name:	eIF3L (EIF3L Products)

Target Details

Molecular Weight:	67 kDa
Gene ID:	51386
UniProt:	Q9Y262
Pathways:	Ribonucleoprotein Complex Subunit Organization

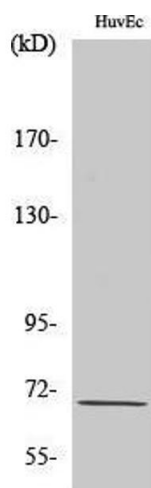
Application Details

Application Notes:	WB 1:500-1:2000, IF 1:200-1:1000, ELISA 1:20000,
Restrictions:	For Research Use only

Handling

Format:	Liquid
Concentration:	1 mg/mL
Buffer:	Liquid in PBS containing 50 % glycerol, 0.5 % BSA and 0.02 % sodium azide.
Preservative:	Sodium azide
Precaution of Use:	This product contains Sodium azide: a POISONOUS AND HAZARDOUS SUBSTANCE which should be handled by trained staff only.
Handling Advice:	Avoid repeated freeze/thaw cycles.
Storage:	-20 °C
Storage Comment:	Store at -20°C.

Images



Western Blotting

Image 1.