

Datasheet for ABIN3184457  
**anti-ELK1 antibody (Ser334)**



[Go to Product page](#)

1 Image

## Overview

Quantity:	100 µL
Target:	ELK1
Binding Specificity:	Ser334
Reactivity:	Human, Mouse, Rat
Host:	Rabbit
Clonality:	Polyclonal
Conjugate:	This ELK1 antibody is un-conjugated
Application:	Western Blotting (WB), Immunohistochemistry (IHC), ELISA, Immunoprecipitation (IP)

## Product Details

Immunogen:	Synthesized peptide derived from human Elk-1 around the non-phosphorylation site of S383.
Isotype:	IgG
Specificity:	Elk-1 Polyclonal Antibody detects endogenous levels of Elk-1 protein.
Characteristics:	Rabbit Polyclonal to Elk-1.
Purification:	The antibody was affinity-purified from rabbit antiserum by affinity-chromatography using epitope-specific immunogen.

## Target Details

Target:	ELK1
Alternative Name:	Elk-1 ( <a href="#">ELK1 Products</a> )

## Target Details

---

Molecular Weight:	42 kDa
Gene ID:	2002
UniProt:	<a href="#">P19419</a>
Pathways:	<a href="#">MAPK Signaling</a> , <a href="#">Neurotrophin Signaling Pathway</a> , <a href="#">Activation of Innate immune Response</a> , <a href="#">Toll-Like Receptors Cascades</a> , <a href="#">Signaling of Hepatocyte Growth Factor Receptor</a> , <a href="#">BCR Signaling</a>

## Application Details

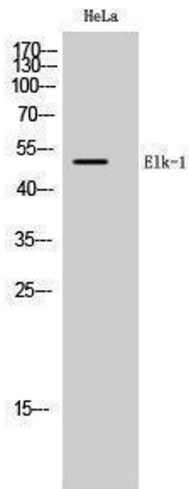
---

Application Notes:	WB 1:500-1:2000, IHC 1:100-1:300, IP 1:200-500, ELISA 1:10000,
Restrictions:	For Research Use only

## Handling

---

Format:	Liquid
Concentration:	1 mg/mL
Buffer:	Liquid in PBS containing 50 % glycerol, 0.5 % BSA and 0.02 % sodium azide.
Preservative:	Sodium azide
Precaution of Use:	This product contains Sodium azide: a POISONOUS AND HAZARDOUS SUBSTANCE which should be handled by trained staff only.
Handling Advice:	Avoid repeated freeze/thaw cycles.
Storage:	-20 °C
Storage Comment:	Store at -20°C.



### Western Blotting

Image 1.