



[Go to Product page](#)

Datasheet for ABIN3184492  
**anti-PTGER2 antibody (C-Term)**

1 Image

### Overview

Quantity:	100 µL
Target:	PTGER2
Binding Specificity:	C-Term
Reactivity:	Human, Mouse, Rat
Host:	Rabbit
Clonality:	Polyclonal
Conjugate:	This PTGER2 antibody is un-conjugated
Application:	Western Blotting (WB), ELISA, Immunofluorescence (IF)

### Product Details

Immunogen:	Synthesized peptide derived from the C-terminal region of human EP2.
Isotype:	IgG
Specificity:	EP2 Polyclonal Antibody detects endogenous levels of EP2 protein.
Characteristics:	Rabbit Polyclonal to EP2.
Purification:	The antibody was affinity-purified from rabbit antiserum by affinity-chromatography using epitope-specific immunogen.

### Target Details

Target:	PTGER2
Alternative Name:	EP2 ( <a href="#">PTGER2 Products</a> )

## Target Details

Molecular Weight: 40 kDa

Gene ID: 5732

UniProt: [P43116](#)

## Application Details

Application Notes: WB 1:500-1:2000, IF 1:200-1:1000, ELISA 1:10000,

Restrictions: For Research Use only

## Handling

Format: Liquid

Concentration: 1 mg/mL

Buffer: Liquid in PBS containing 50 % glycerol, 0.5 % BSA and 0.02 % sodium azide.

Preservative: Sodium azide

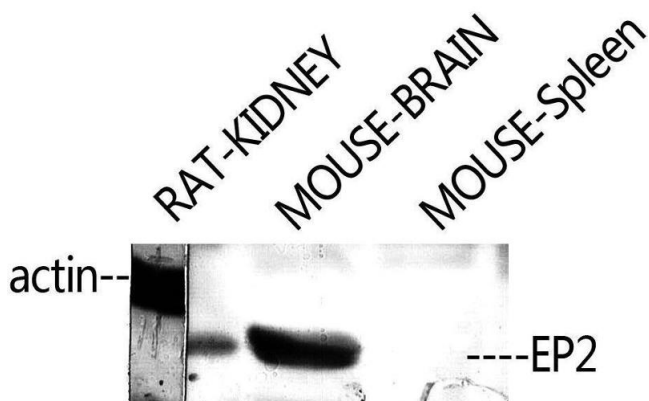
Precaution of Use: This product contains Sodium azide: a POISONOUS AND HAZARDOUS SUBSTANCE which should be handled by trained staff only.

Handling Advice: Avoid repeated freeze/thaw cycles.

Storage: -20 °C

Storage Comment: Store at -20°C.

## Images



### Western Blotting

Image 1.