



Datasheet for ABIN3184501
anti-EPHA2/3/4 antibody (Lys14)



[Go to Product page](#)

2 Images

Overview

Quantity:	100 µL
Target:	EPHA2/3/4
Binding Specificity:	Lys14
Reactivity:	Human, Rat
Host:	Rabbit
Clonality:	Polyclonal
Conjugate:	This EPHA2/3/4 antibody is un-conjugated
Application:	Western Blotting (WB), Immunofluorescence (IF), ELISA

Product Details

Immunogen:	Synthesized peptide derived from human EphA2/3/4 around the non-phosphorylation site of Y588/596.
Isotype:	IgG
Specificity:	EphA2/3/4 Polyclonal Antibody detects endogenous levels of EphA2/3/4 protein.
Characteristics:	Rabbit Polyclonal to EphA2/3/4.
Purification:	The antibody was affinity-purified from rabbit antiserum by affinity-chromatography using epitope-specific immunogen.

Target Details

Target:	EPHA2/3/4
---------	-----------

Target Details

Alternative Name: EphA2/3/4 ([EPHA2/3/4 Products](#))

Molecular Weight: 19 kDa

Gene ID: 1969, 2042, 2043

UniProt: [P29317](#), [P29320](#), [P54764](#)

Application Details

Application Notes: WB 1:500-1:2000, IF 1:200-1:1000, ELISA 1:40000,

Restrictions: For Research Use only

Handling

Format: Liquid

Concentration: 1 mg/mL

Buffer: Liquid in PBS containing 50 % glycerol, 0.5 % BSA and 0.02 % sodium azide.

Preservative: Sodium azide

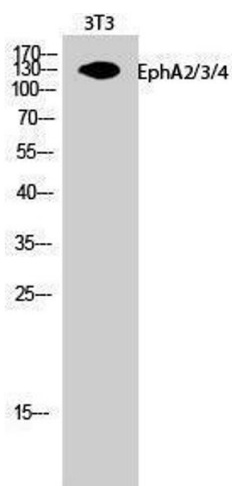
Precaution of Use: This product contains Sodium azide: a POISONOUS AND HAZARDOUS SUBSTANCE which should be handled by trained staff only.

Handling Advice: Avoid repeated freeze/thaw cycles.

Storage: -20 °C

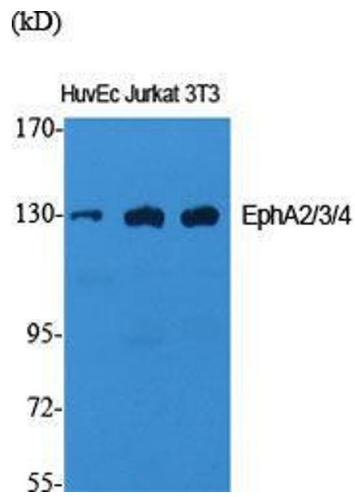
Storage Comment: Store at -20°C.

Images



Western Blotting

Image 1.



Western Blotting

Image 2. Western Blot (WB) analysis of specific cells using EphA2/3/4 Polyclonal Antibody.